

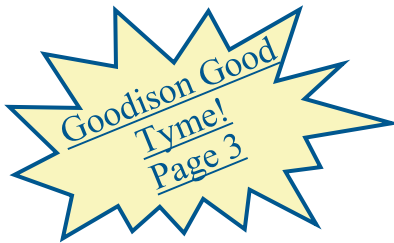
# Oakland Township Parks and Recreation Commission Newsletter

Fall 2021

The Mission of Oakland Township Parks and Recreation Commission is to provide a sustainable system of parks, trails, programs, amenities, and services which create memorable experiences and a sense of place, contributes to the economic value of the Township and preserves the historical and natural heritage of the landscapes for existing and future generations.



OPC Archery Tour and Demo 2018, Marsh View Park Archery Range



## Inside this issue:

USFWS Grant	<a href="#">1, 34</a>
What's New in the Parks	<a href="#">2</a>
Goodison Good Tyme!	<a href="#">3</a>
It's All About Bark Article	<a href="#">4, 29</a>
Fall Programs	<a href="#">5-10</a>
Team Archery	<a href="#">11</a>
Millipede Article	<a href="#">12, 14</a>
Lost Lake Open Houses	<a href="#">13-14</a>
Stewardship	<a href="#">15-20</a>
Cranberry Lake Farm Historic District	<a href="#">21-23</a>
Oakland Township Historical Society Programs	<a href="#">24-25</a>
Paint Creek Trail News	<a href="#">26-28</a>
Six Rivers Land Conservancy News	<a href="#">28</a>
Parks & Rec Team Update	<a href="#">29</a>
Registration Form	<a href="#">30</a>
Hunting Information	<a href="#">31-32</a>
Parks Map	<a href="#">33</a>
Commissioners, Staff	<a href="#">Back Cover</a>

### Special points of interest:

- ◆ Archery
- ◆ Stewardship Programs
- ◆ Paint Creek Trail

## Ongoing Partnership Supports Restoring Park Prairies and Wetlands

For the fourth time since 2014, Oakland Township Parks and Recreation (OTPR) has been awarded a habitat restoration grant from the [US Fish and Wildlife Service!](#) This 2021 [Partners for Fish and Wildlife](#) Grant will cover 40% of the costs for OTPR to plant native prairie grasses and flowers and to restore wetland hydrology on 42 acres of agricultural fields at [Stony Creek Ravine Nature Park](#). The remaining funding for this project is provided by Oakland Township's [Land Preservation Millage](#).



Prairie Restoration at Charles Ilesley Park

These habitat restoration projects are important components of our parks' natural area management plans because they provide pollinator habitat and protect water quality in streams like the West Branch of the [Stony Creek](#).

(Continued on page [34](#))

## Goodison Good Tyme Returns!

We are happy to once again offer by free-admission our family-friendly fall festival! Festival visitors will recognize many activities such as our archery and historical society booths, zip-line, t-shirt painting, balloon artist, and musical entertainment. However, this year we have enhanced the safety of this event by replacing some activities. New offerings include an inflatable maze as well as food service by the [House of Mac](#) (at a nominal cost); specializing in kid and adult friendly mac'n cheese dishes. Looking forward to seeing you on **Saturday September 18th between 11am and 3pm at Bear Creek Nature Park!**



# What's New in the Parks...

## Full Steam Ahead at Paint Creek Junction Park

This summer anyone who travels the Paint Creek Trail between Adams and Clarkston roads will have noticed the construction activities at [Paint Creek Junction Park](#). This Township Park, located west of Orion Road and adjacent to the Paint Creek Trail, is where Oakland Township Parks and Recreation is installing trailhead facilities for users of the Paint Creek Trail's northern section.

(Continued on page 29)

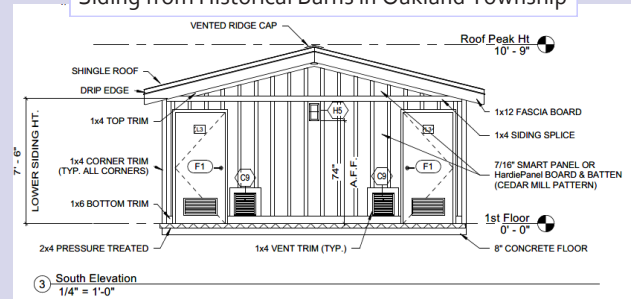


Paint Creek Junction Park Installation of Aggregate Surfacing in Parking Lot

## Permanent Restrooms Coming to Bear Creek Nature Park and Marsh View Park in 2022

The current portable toilets at both parks are scheduled to be replaced with environmentally sustainable and universally accessible flushable vault toilets in Spring 2022. Flushable vault restrooms include sinks and look like conventional restrooms from the floor up, but they use 70% less water than conventional restrooms. These restrooms are being funded by a combination of two Michigan Natural Resources Trust Fund ([MNRTE](#)) grants totaling \$100,000 which will be matched by Oakland Township Parks and Recreation millage funds.

Restroom Exterior Simulates Board and Batten Siding from Historical Barns in Oakland Township



## Purchase of Lost Lake Nature Park Expansion On Track for Early 2022

In preparation to purchase this 235-acre addition to Lost Lake Nature Park, Oakland Township has signed an agreement with the Michigan Department of Natural Resources (MDNR) for a three million-dollar Michigan Natural Resources Trust Fund (MNRTE) grant. To meet both local and state requirements, Oakland Township has furnished all necessary due diligence information to the MDNR for their review and approval. The MNRTE grant, which will cover 75% of the purchase price, is being matched by funds from Oakland Township's Land Preservation millage. This expansion property will protect green space connections, water resources, rare species, and rare habitats while providing opportunities for additional trail connections.

[Swamp Milkweed](#) at Lost Lake Nature Park Expansion



**In Memoriam** We are saddened to report the passing of longtime township resident David Mackley, an Oakland Township Parks and Recreation Commissioner from 1984 through 2016. An early advocate for the preservation of natural areas, Dave was instrumental in the acquisition, planning and development of many of our Township parks. Dave actively supported the successful nomination and interpretation of the Axford-Coffin Farmstead, a nationally recognized historic district at [Cranberry Lake Park](#), and volunteered countless hours in service to our community. During his tenure, Dave was honored with both the 2016 Michigan Recreation and Park Association's [Community Service Award](#) and a 2012 State of Michigan Special Tribute. Our sincere condolences to his family and friends.

# Goodison Good Tyme!

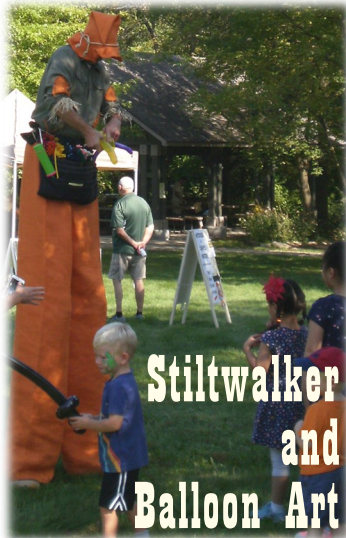
Saturday, September 18

11AM-3PM

Bring Friends and Family

Face masks are recommended when unable to maintain 6 foot social distancing regardless of vaccination status.

**FREE!**



Bear Creek Nature Park

740 West Snell Road

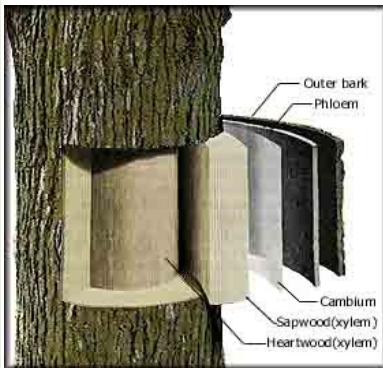
Sponsored by Oakland Township Parks and Recreation Commission

Free admission, nominal fee for food truck.

# It's All About That Bark

Sue M. Neal, Dinosaur Hill Nature Preserve

Nature is the perfect place to let your senses take you on a one of a kind journey. There are so many different smells, textures and sounds to explore. Closing your eyes and sitting quietly can provide a relaxing and surprising experience because there is so much that we don't notice if we rely mainly on our vision. When you think of different ways to explore your senses in nature, one of my favorites that comes to mind is the sense of touch...and one of the coolest ways to explore your sense of touch is by examining the bark of different trees. Some trees have slick, smooth bark while others have cracked and rough bark. Why do trees have such different textures?



Bark layers. Image 1.

Before we can answer that question it is important to learn a bit more about bark and what it does. [Bark](#) is actually made up of several different layers and each of these layers has its own unique function. The inner, fibrous layer of bark is called the bast and serves a critical role in the survival of the tree. The bast is made up of phloem and phloem are like tubes that transport the food ([sugars!](#)) a tree needs to live and grow from the leaves to the rest of the tree.

The outermost layer is the bark we are all the most familiar with. This layer serves a number of important functions including protecting the tree from insects and parasitic plants while also preventing the tree from losing water. Let's talk about how the bark protects a tree from losing water first. Cork cells that make up bark contain a really interesting material called [suberin](#). Suberin prevents water from evaporating away from the tree. Some describe suberin as a waxy substance but it is technically a polyester (biopolyester to be precise)! Suberin is hydrophobic which means water can't enter or leave through the cells that contain it.

In addition to suberin, outer bark has [air spaces](#) which can help to insulate trees from temperature fluctuations. This is the first example of ways that bark varies in appearance and texture. Trees in northern climates will often have thicker bark, as that provides more surface for trapping air and thus better insulation. Another cool feature of thick bark is that it can help to protect the tree from the heat and dryness of wildfires. This doesn't come without its challenges as rapid fluctuations in temperature (think a sunny day followed by a bitterly cold night) can actually cause the thick bark to crack as it contracts in the cold.

On the other hand, some trees (even in the north) have very thin and smooth bark. One local example is the [Beech tree](#). While beech trees do grow in the north they evolved in tropical climates. There are numerous plants in tropical environments that try to gain an advantage by growing on the surface of the bark. [Epiphytes](#), including lichen and mosses, are a main example. While some lichen growing on a tree here in Oakland Township is no cause for concern, epiphytes in tropical environments can be so numerous and aggressive as to break branches or even bring down an entire tree with their weight. Smooth, thin bark is simply much more difficult for epiphytes to gain a foothold on.



Beech tree. Image 2.

Beyond just being thin and smooth, the bark of birch trees introduces another interesting texture. Birch bark is thin and papery. This paper peels and sloughs off regularly. [Birch trees](#) grow in moist areas where insects and epiphytes are common and they use their bark, in part, to conduct photosynthesis. Since they use their bark for photosynthesis, it is quite important to prevent lichens from covering the surface. The very smooth bark mean insects and epiphytes can't get a good hold on the bark and any lichen that do manage to grow on the bark are shed as the bark peels off each season.

(Continued on page 29)

Oakland Township Parks & Recreation

# Fall 2021 Nature Programs

Register online: [oaklandtownship.recdesk.com](http://oaklandtownship.recdesk.com)

The health of our community is our priority. Our team of staff and instructors are trained in safety protocol that follow CDC guidelines and are equipped with Personal Protection Equipment and gear (PPE).

## Seasonal Adult Hike: Michigan's Bats

Adults 18+

Sunday, September 12

8:00 - 9:30pm

Cranberry Lake Park, 388 West Predmore, Oakland, MI 48363



We've all witnessed our flying mammal friends darting haphazardly through the twilight skies and have heard horror stories of rabies, hair tangles, blood sucking and disease, but what's true and what's falsehood? Join us at Cranberry Lake Park as we explore the 9 species of bats which help keep our skies free from mosquitos. We will get up close with a bat skeleton to see how they are able to achieve flight, learn about the processes and senses needed for echolocation, and even learn a few tips and tricks for keeping bats out of our own homes! We will be heading out on the trails to try and spot bats and other nocturnal animals actively hunting at the park! Participants will take home a bat keychain and the instructions needed to build their own bat house. Participants are asked to bring their own flashlights/headlamps and bug spray.

**Resident Registration:** Open Now

**Non-Resident Registration Opens:** August 22

**Residents:** \$5

**Non-Residents:** \$7

**Register by:** September 3

## Fall Mushrooms of Michigan

Adults 18+

Sunday, September 19

10:00-11:30am

Lost Lake Nature Park, 846 Lost Lake Trail, Oakland MI 48363



Sign up early for this popular program!

Power Point presentation handouts to all registrants.

Take a tour of the amazing world of mushrooms. Discover the many types of mushrooms in Michigan in this unique and very hands-on program from mushroom expert Jerry Watson of the Michigan Mushroom Hunters Club. We will peruse the Seasonal Mushrooms of Michigan with a presentation from our expert and learn about where and how mushrooms grow while inspecting numerous samples up close. Then we'll take a walk (no picking) to search for mushrooms in the park too! There is no substitute for the excellent opportunity of joining in a mushroom hunt with a true mushroom expert!

**Resident Registration:** Open Now

**Non-Resident Registration Opens:** August 29

**Residents:** \$5

**Non-Residents:** \$7

**Register by:** September 12

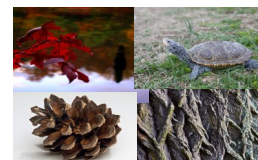
## A Sensory Adventure Through Nature

Families

Sunday, September 26

10:00 - 11:30am

Lost Lake Nature Park, 846 Lost Lake Trail, Oakland, MI 48363  
Lakeside Picnic Area



**This program is exclusively for special needs individuals of all ages.**

This program has been tailored to provide those with cognitive impairments and special needs a unique opportunity to explore a gentle and quiet park while getting hands-on in nature in a quiet and controlled setting. We will be utilizing all of our senses as we explore the sights, sounds, smells, tastes and feelings of the natural world from the comfort of our Lakeside Picnic Area. We will be meeting a real turtle who we can touch and learn from, smelling some of the sweetest smells nature can produce, feeling a variety of natural materials including furs, barks, plants, bones, pinecones and more while learning a little about them, and even whipping up a tasty natural snack and more! We will be in a shaded and wheelchair accessible area surrounded by serene forest and lakefront. Additional questions about accessibility or concerns can be sent to [info@DinosaurHill.org](mailto:info@DinosaurHill.org)

**All family members in attendance must register. Children under age 5 must be accompanied by an adult.**

**Resident Registration:** Open Now

**Non-Resident Registration Opens:** September 5

**Residents:** \$5

**Non-residents:** \$7

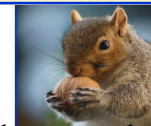
**Register by:** September 19

Oakland Township Parks & Recreation  
**Fall 2021 Nature Programs**  
 Register online: [oaklandtownship.recdesk.com](http://oaklandtownship.recdesk.com)

The health of our community is our priority. Our team of staff and instructors are trained in safety protocol that follow CDC guidelines and are equipped with Personal Protection Equipment and gear (PPE).

**Let's Go Nuts!**

**Pre-K 3-5 years old**



Saturday, October 2

10:00 - 11:00am

[Bear Creek Nature Park](#), 740 West Snell Rd., Rochester, MI 48306

Just because the temperatures are starting to fall doesn't mean that it's already time for a lengthy rest as there is still plenty to do. Join us at the friendly Bear Creek Nature Park as we investigate the wacky world of squirrels and other hibernators. We will take an easy stroll down the trails in pursuit of our tree climbing friends, calling to them and pretending to be them. Afterwards we will return to the pavilion and put together squirrel feeders to take home before engaging in an acorn scavenger hunt activity

**Children under age 5 must be accompanied by an adult.**

**Resident Registration:** Open Now

**Non-Resident Registration Opens:** September 11

**Residents:** \$5

**Non-residents:** \$7

**Register by:** September 26

**Getting to Know the Moon**

**Age 7 +**



Friday, October 15

7:30-9:00pm

[Marsh View Park](#), 3100 E. Clarkston Rd., Oakland MI 48363

Come join the Oakland Astronomy Club in the world-wide program, 'International Observe The Moon Night!' We'll sit together under the stars to watch this fascinating program and if the skies are fair, we'll share telescopic close-up views of the Waxing Gibbous (growing hump) Moon. Bring your binoculars and we'll show you how to find treasures of the Milky Way.

[Park in the East parking lot.](#) **All family members in attendance must register.**

Note: We will provide no-contact electronic eyepieces and monitors for telescope views.

**Resident Registration:** Open Now

**Non-Resident Registration Opens:** September 24

**Residents:** \$5

**Non-residents:** \$7

**Register by:** October 10

**Creepy, Slithery & Spooky**

**7-10 years old**



Wednesday, October 27

4:30 - 6:00pm

[Lost Lake Nature Park](#), 846 Lost Lake Trail, Oakland, MI 48363

With Halloween right around the corner, we're going to double-down on the spook factor by meeting some of our favorite frighteningly friendly critters. We will be able to hold, handle and pet some gigantic cockroaches from Madagascar, get up-close and personal with a tarantula from Chile, and decorate our necks with the breathing necktie that is our African ball-python. Throughout the whole adventure we will be learning about their habitats, diets and unique adaptations that allow these creepy critters to survive where they do. We might even learn that the creepier side of nature isn't that creepy after all! Before all is said and done we will even put together our own snake puppet to frighten our friends and family.

**Resident Registration:** Open Now

**Non-Resident Registration Opens:** October 6

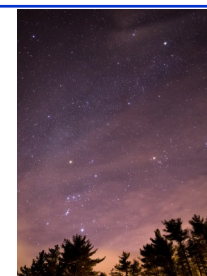
**Residents:** \$5

**Non-Residents:** \$7

**Register by:** October 19

**Winter Circle of Stars**

**Families**



Friday, November 19

7:30-9:00pm

**Virtual Online Presentation**

Learn the Winter Constellations in this [online presentation](#) sponsored by Oakland Township Parks and Recreation and the Oakland Astronomy Club. We'll help you navigate your way in the Winter sky by sharing amazing photographs of Winter's Deep Sky treasures and identifying the brightest stars in the sky. By evening's end most of the amazing Winter Circle of Stars have cleared the Eastern Horizon. Enjoy these constellations all season long as the mighty hunter Orion and his companions rise in the East and sojourn through the Winter skies.

**Resident Registration:** Open Now

**Non-Resident Registration Opens:** October 29

**Residents:** \$5

**Non-Residents:** \$7

**Register by:** November 14

Oakland Township Parks & Recreation

# Fall 2021 Nature Programs

Register online: [oaklandtownship.recdesk.com](http://oaklandtownship.recdesk.com)

The health of our community is our priority. Our team of staff and instructors are trained in safety protocol that follow CDC guidelines and are equipped with Personal Protection Equipment and gear (PPE). For indoor programs the CDC recommends wearing face masks and 6 foot social distancing regardless of vaccination status.

## **Eco Adventure & Forest Forensics**

**9-12 years old**

Tuesday, November 23

10:00 - 11:30am

*Lost Lake Nature Park, 846 Lost Lake Trail, Oakland, MI 48363*

With school being out we are opening our doors for a special adventure through the forest! We will be heading outside and collecting specimens from nature to place beneath microscopes and stereoscopes to observe intricate structures and patterns hidden within, then we will dissect owl pellets and reassemble the bones to uncover what was eaten! In the woods we will also hone our tracking skills as we become sleuths on the track for elusive wildlife. We will be combining the best of entertainment and education in this nature extravaganza for the older kids.



**Resident Registration:** Open Now

**Non-Resident Registration Opens:** November 2

**Residents:** \$5

**Non-Residents:** \$7

**Register by:** November 15

## **My Family Rocks**

**Families**

Saturday, December 18

10:00 - 11:30am

*Lost Lake Nature Park, 846 Lost Lake Trail, Warming Shelter, Oakland, MI 48363*



With the natural world beginning to slow down in preparation for winter we think that it's only fitting to spend a little bit of time talking about the non-living portions of the world. There are countless minerals, fossils, rocks and crystals to talk about and we're obsessed with them! Join us from the comfort of the Lost Lake Warming Shelter for a hands-on look at the world of geology. We will test rock hardness while learning about the Mohs scale, observe crystals from beneath stereoscopes, break open our own geodes to take home, and learn the basic tools needed to start tumbling rocks of our own all the while exploring the world of geology. We will even be making our own hodgepodge holiday ornaments to take home from igneous rocks!

**Children under age 5 must be accompanied by an adult. All family members in attendance must register.**

**Resident Registration:** Open Now

**Non-Resident Registration Opens:** November 27

**Residents:** \$5

**Non-Residents:** \$7

**Register by:** December 12

Oakland Township Parks & Recreation

# Fall 2021 Outdoor Adventure

Register online: [oaklandtownship.recdesk.com](http://oaklandtownship.recdesk.com)

## **Basics of Kayaking Clinic**

**Ages 10 - Adult**

Saturday, September 11, 2021

10:00 - 11:30am

*Draper Twin Lake Park, 1015 Inwood Rd., Rochester, MI 48306\**



This clinic is taught both on land and in the water and will focus on safety and introductory stroke techniques. Learn basic kayaking safety skills such as fitting your life jacket, what clothing to wear and getting into and out of your kayak from a dock. Basic paddling skills include forward, reverse, and turning strokes. Designed for new paddlers and anyone who would like formal instructions. Draper Twin Lake is an open calm flat water without jet skis and motor boats.

**Resident Registration:** Open now

**Non-Resident Register Opens:** August 21

**Residents:** \$20

**Non-residents:** \$35

**Register by:** September 5

\*Draper Twin Lake is a calm water lake. The distance from the parking lot to the dock, which has access, is approximately one-half mile via accessible path.

Oakland Township Parks & Recreation

# Fall 2021 Fitness and Wellness Programs

Register online: [oaklandtownship.recdesk.com](http://oaklandtownship.recdesk.com)

The health of our community is our priority. Our team of staff and instructors are trained in safety protocol that follow CDC guidelines and are equipped with Personal Protection Equipment and gear (PPE). For indoor programs the CDC recommends wearing face masks and 6 foot social distancing regardless of vaccination status .

## **All Levels Yoga      Sunday Mornings 9:30am - 10:30am      Adults 12+**

Join [Up Dog Yoga](#) and Oakland Township Parks and Recreation as they team up to bring you high quality yoga! *All Levels* classes will accommodate all skill levels with an option to modify. Bring your water bottle and yoga mat. Fall classes will meet outdoors. As the weather gets cooler, continue your practice inside at the Paint Creek Cider Mill or choose the Live Stream option. 6 weeks. Resident registration currently open.



**Fees for all sessions:                  Residents: \$30                          Non Residents: \$45**

### **Outdoor Sessions**

*Cranberry Lake Farm, 388 West Predmore, Oakland, MI 48363*

August 15th-September 19      **Non-Resident Registration: Jul. 25      Register by: Aug. 10**

September 26-October 31      **Non-Resident Registration: Sept. 5      Register by: Sept. 19**

### **Indoor or Live Stream Sessions**

*Paint Creek Cider Mill, 4480 Orion Rd., Rochester, MI 48306*

November 7-December 12      **Non-Resident Registration: Oct. 17      Register by: Oct. 31**

December 19-January 23      **Non-Resident Registration: Nov. 28      Register by: Dec. 12**

## **Slow Flow Yoga      Sunday Mornings 11:00am - 12:00pm      Adults 12+**

Join [Red Lotus Yoga](#) and Oakland Township Parks and Recreation for high quality yoga! *Slow Flow* classes will be more of a challenge with longer holds and postures. Bring your water bottle and yoga mat. 6 weeks. Fall classes will meet outdoors. As the weather gets cooler, continue your practice inside at the Paint Creek Cider Mill or choose the Live Stream option. 6 weeks. Resident registration currently open.

**Fees for all sessions:                  Residents: \$30                          Non Residents: \$45**

### **Outdoor Sessions**

*Cranberry Lake Farm, 388 West Predmore, Oakland, MI 48363*

August 15th-September 19      **Non-Resident Registration: Jul. 25      Register by: Aug. 8**

September 26-October 31      **Non-Resident Registration: Sept. 5      Register by: Sept.19**

### **Indoor or Live Stream Sessions**

*Paint Creek Cider Mill, 4480 Orion Rd., Rochester, MI 48306*

November 7-December 12      **Non-Resident Registration: Oct. 17      Register by: Oct. 31**

December 19 -January 23      **Non-Resident Registration: Nov. 28      Register by: Dec. 12**

## **Yoga Walk in the Park      Saturday Afternoons 2pm-3pm      Adults 12+**

We often forget that yoga is not tied to indoors or places where we can roll out our yoga mats. Yoga is wherever our bodies are. Try a new twist – led by a certified yoga instructor, walk the trails through the park while intermittently adding yoga poses to calm your mind, improve balance, and flexibility. Resident registration is currently open.

**Fees for all sessions:                  Residents: \$30                          Non Residents: \$45**

*Bear Creek Nature Park, 740 W. Snell Rd, Rochester, MI 48306*

November 6 - December 18      **Non-Resident Registration: Oct. 16      Register by: Oct. 31**  
(no class on Nov 27)

January 8 - February 12      **Non-Resident Registration: Dec. 18      Register by: Jan. 2**

February 26 - April 2      **Non-Resident Registration: Feb. 5      Register by: Feb. 20**



## Oakland Township Parks & Recreation

# Fall 2021 Fitness and Wellness Programs

Register online: [oaklandtownship.recdesk.com](http://oaklandtownship.recdesk.com)

The health of our community is our priority. Our team of staff and instructors are trained in safety protocol that follow CDC guidelines and are equipped with Personal Protection Equipment and gear (PPE). For indoor programs the CDC recommends wearing face masks and 6 foot social distancing regardless of vaccination status.

### Tai Chi Beginners

**Tuesdays 6:00pm -7:00pm**

**Adults 18+**

These classes will cover the beginning movements of the Tai Chi form and principles, as well as enhance your overall health by improving balance and feeling of wellbeing. You should be able to support your weight while standing or have a chair if unable to stand without assistance. Grab some comfortable clothing and shoes. Flip flops or sandals are not recommended. The first session will meet outdoors. In November, our practice will move indoors to the Paint Creek Cider Mill. All sessions are led by Marci Jenkins who has over 20 years of Tai Chi training and practice. 6 weeks. Maximum 10 participants. Resident registration is currently open.



**Fees for all sessions:**

**Residents: \$30**

**Non Residents: \$45**

### Outdoor Sessions

*Cranberry Lake Farm, 388 West Predmore, Oakland, MI 48363*

September 28-November 2

**Non-Resident Registration:** Sept. 7

**Register by:** Sept.20

### Indoor

*Paint Creek Cider Mill, 4480 Orion Rd., Rochester, MI 48306*

November 9-December 21

(No class November 23)

**Non-Resident Registration:** Oct. 19

**Register by:** Nov. 1

### Next Step Tai Chi Beginners Wednesdays 6:00pm-7:00pm

**Adults 18+**

Continue playing Tai Chi by learning the remaining movements of the Yang Style while reviewing the basic principles of Tai Chi. The first session will meet outdoors. This class is for those students who have already learned the first third of the Yang Style (Chen Man Ching) Tai Chi form and/or have the permission of the instructor. In November, our practice will move indoors to the Paint Creek Cider Mill. All sessions are led by Marci Jenkins who has over 20 years of Tai Chi training and practice. 6 weeks. Maximum 10 participants. Resident registration is currently open.

**Fees for all sessions:**

**Residents: \$30**

**Non Residents: \$45**

### Outdoor Session

*Cranberry Lake Farm, 388 West Predmore, Oakland, MI 48363*

September 29-November 3

**Non-Resident Registration:** Sept. 8

**Register by:** Sept. 21

### Indoor

*Paint Creek Cider Mill, 4480 Orion Rd., Rochester, MI 48306*

November 10-December 22 (No class November 24)

**Non-Resident Registration:** Oct. 20

**Register by:** Nov. 2

Registration for all programs is open to Oakland Township residents now! Programs fill up quickly, so Oakland Township residents are encouraged to take advantage of this early residential registration opportunity.

[oaklandtownship.recdesk.com](http://oaklandtownship.recdesk.com)



# Congratulations Team Archery!

Covid-19 was no match for this season's Team Archery! Young archers from Oakview Middle School, Hart Middle School, VanHoesen Middle School, West Middle School, Adams High School, Notre Dame Prep Academy, and Stony Creek High School joined together as one amazing archery team despite some tough challenges and accomplished great things.

The team, comprised of 57 archers, practiced at our very own archery range at Marsh View Park this spring under the instruction of Coach Nick DiCresce and Coach Cliff Selent. Over the course of the season, they polished their archery skills and then showed them off at the Michigan High School Archery Association Championship Tournament that took place in May.

Our archers placed 2<sup>nd</sup> overall in the High School – Boys Division, and 3<sup>rd</sup> overall in the Middle School – Girls Division. Additionally, several of our archers earned Top Archer status: Casey Dykstra, Nicholas Hedrick, Ava MacDonald, Kelly Menzies, Jacob Thor, and Autumn Wood.

These archers overcame strict Covid-19 restrictions and testing, chilly temperatures, and often rain at practice. They demonstrated perseverance and determination to push through the season, which is an enormous 'win' in anyone's book. Way to go, Team!



Jacob Thor, awarded for placing 3<sup>rd</sup> in the Middle School Boys-Barebow Compound division.



Our Team Archery competitors at the Michigan High School Archery Association Championship Tournament



Team Archery showing good form during their competition at the Michigan High School Archery Association Championship Tournament.



[Michigan Senior Olympics](#) held their Spring Archery Event at Marsh View Park Archery Range. This partnership between MSO and OTPR was a big success! Many of the archers had never been to our range before and feedback from the athletes was very positive. We are hoping for many more collaborations with Michigan Senior Olympics!

DISCOVER!



# LOST LAKE NATURE PARK



A Partnership between Dinosaur Hill Nature Preserve and Oakland Township Parks and Recreation Commission

[www.oaklandtownship.org](http://www.oaklandtownship.org)

846 Lost Lake Trail, Oakland Charter Township, MI 48363

248-651-7810

## My Friend the Millipede



By: Sue M. Neal, Dinosaur Hill Nature Preserve

Decomposers are the unsung heroes of the natural world. Consider for a moment what the forest at Lost Lake would like if there were no decomposers there...what would happen to all of the leaves that fell to the ground? What about any animals that died? What about the health of the soil? [Decomposers](#) are brilliant and are an essential part of the nutrient cycle. They break matter down and recycle the nutrients that would otherwise be locked away. Yet many of us don't know a whole lot about who decomposers are or how they do their critical work. Let's meet one of my favorite decomposer friends that you are sure to find at Lost Lake!

Every kid has turned over a rotting log just to find out who is hiding underneath. One common sight is the millipede. These guys hide out on the forest floor where it is damp because they will dry out (desiccate) if not in a humid environment. [Millipedes](#) are considered detritivores (they eat detritus like leaves and logs!). Millipedes are separate and distinct from centipedes, though for a different reason than you might expect. Some folks think millipedes have 1000 legs and centipedes have 100 legs. While it is true that millipede *means* 1000 legs and that centipede *means* 100 legs - I hate to disappoint, but this is not true. The actual difference is partly based on the way their legs are arranged. Millipedes have two pairs of legs for each segment of their body while centipedes only have one pair per segment. So how many legs do millipedes actually have? This can vary by species and sub-species so it depends on the exact millipede you are buying shoes for but expect to need fewer than 50 pairs on average for your millipede friends at Lost Lake. They coordinate all those legs in a wavelike motion called a [metachronal rhythm](#).



Millipedes on rotting log.  
Image 1



Coiled millipede.  
Image 2

Millipedes at Lost Lake begin their breeding season in late spring to early summer and will continue to reproduce until the fall weather turns chilly. They will build a nest that is made of chewed up leaves and millipede poop. The female will lay a single egg and then curl herself around the egg in order to keep it safe until it hatches. Once a baby millipede hatches it is independent of mommy millipede. The newly hatched millipede will only have three pairs of legs and will be much smaller than an adult millipede. As the little one grows bigger, it will molt many times throughout its life. Since millipedes continue to grow throughout their lives, the overall length is a good indicator of relative age. It will take our new little millipede 1-2 years before it is able to reproduce. This might seem like a long time but it is important to realize that millipedes of Lost Lake can live to be up to 11 years old!

Not only do millipedes live a long time, they have also been around a long time. While we still have a lot to learn about the first creatures on earth, many scientists speculate that millipedes are among the very first animals to breath air. A fossil of a millipede was found in Scotland that was estimated to be 428 million years old and is the [oldest fossil evidence](#) that has been found of an air breathing creature. During their long time on earth, millipedes have picked up some pretty cool adaptations, including the ability to use chemicals to ward off predators.

(Continued on page 14)



DISCOVER!

# LOST LAKE NATURE PARK



A Partnership between Dinosaur Hill Nature Preserve and Oakland Township Parks and Recreation Commission

[www.oaklandtownship.org](http://www.oaklandtownship.org)

846 Lost Lake Trail, Oakland Charter Township, MI 48363

248-651-7810

Drop-in style open houses are open to all residents and non-residents.

**FREE!** Oakland Township Parks and Recreation and Dinosaur Hill Nature Preserve have partnered to bring Oakland Township residents and others exciting new programs at Lost Lake Nature Park. **FREE!**

The health of our community is our priority. Our Team of staff and instructors are trained in safety protocol that follow CDC guidelines and are equipped with Personal Protection Equipment and gear (PPE). For indoor programs the CDC recommends wearing face masks and 6 foot social distancing regardless of vaccination status.

Open houses are **FREE!** Open houses are **FUN!** Open houses are for **EVERYONE!** The nature center will be open for four drop-in hours! Along with being able to explore this unique and magnificent park we will have themed activities and discussions on a monthly topic. We encourage you to make a day of your adventure and bring a picnic lunch to enjoy a scenic view of our secluded Lost Lake from beneath the canopy of some impressive white pines. Each month features its own unique natural topic with materials and activities for adults and children alike, free snacks, and crafts and games for our youngest participants.

**Each Open House runs from 12-4pm on select Sundays and explores a unique theme.**

## Sunday, September 26th - Replanting a Forest

As the temperatures drop, so do the acorns, the samaras, the chestnuts and so many other seeds as they initiate the first step of their lengthy lifespans. Between the burrs, the nettles, the wild berries and more, it's no wonder that the squirrels are having a feeding and collecting frenzy out there in the woods this time of year! Join us as we examine seed dispersal in the forest. We will look at examples of flying seeds, sticky seeds, exploding seeds, and aquatic hitchhikers! We will even look at seeds beneath a microscope to see their incredibly fine details up close! Our youngest participants will even be putting together their own acorn handprints to take home - just keep them away from the squirrels!



## Sunday, October 17th - Rot & Decay

When you really put the forest floor on a pedestal and examine it, things can get kind of gross really quickly. All that nutritious and delicious dark fertile soil is made from the remains of living things. Mostly organic plant material, but the occasional squirrel, roly-poly, and deer are an essential part of the forest floor's ecosystem. Everything eventually perishes and returns to the ground to feed new life. Join us as we take a fascinating look at decomposition! We will look at how carbon is stored in life before being released back into the world, how entire communities can survive off of a fallen tree for years, and even watch a worm poop! The perfect topic to explore right before Halloween! Our youngest explorers will have the opportunity to put together their own wiggly worm bookmarks to take home!



Rotting beech log. © Acabashi; Creative Commons CC-BY-SA 4.0; Source: Wikimedia Commons

For more information visit [www.dinosaurhill.org](http://www.dinosaurhill.org)

(Continued on page 14)



DISCOVER!

# LOST LAKE NATURE PARK



A Partnership between Dinosaur Hill Nature Preserve and Oakland Township Parks and Recreation Commission

[www.oaklandtownship.org](http://www.oaklandtownship.org)

846 Lost Lake Trail, Oakland Charter Township, MI 48363

248-651-7810

(Continued from page 11) **Drop-in style open houses are open to all residents and non-residents.**

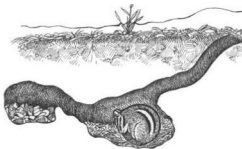
## Sunday, November 21st - Michigan Turkeys

It might actually be illegal to talk about turkeys any other month than November, so when this chilly month rolls around we need to jam as much turkey knowhow in as possible - we only have 30 days! Join us at Lost Lake as we explore the wacky and wild world of the noble turkey. This large bird has comically distinct scat, a history with Benjamin Franklin, the kookiest adaptations of the avian community and some really impressive feathers! We will look at a turkey mount up close, pursue them in the woods, and perfect our turkey calls. Our youngest explorers will have the opportunity to put together their own decorative placemats for the upcoming holiday.



## Sunday December 19th - The Happy Holiday Hullabaloo

With another year of outdoor programming behind us it's time to celebrate in our favorite way at the nature center. We will be putting together several holiday crafts to take home while celebrating the approaching season of sledding, hot chocolate, and runny noses. We will be taking quick looks at a variety of topics while assembling our take-homes, from hibernation to dormancy all the way through to what is happening beneath the snow and soil during the coldest parts of the year. This annual celebratory open house is a great chance to put together some last-minute gifts for mom and dad and unwind before the festivities at home get underway! Happy Holidays from us at Lost Lake!



## My Friend the Millipede

(Continued from page 12)



Outside of creative chemistry, millipedes are also equipped with antennae and a set of simple eyes that are called 'ocelli'. Their eyes are basic and are mostly used to sense movement. On their antennae, they have a special organ which allows the millipede to sense many things about the environment. Using their antennae, millipedes can taste things, smell odors, sense the temperature and humidity, AND detect pheromones that they use to communicate their love to one another.

If you explore the magical world of millipedes beyond those that live at Lost Lake you can find all sorts of amazing and interesting species. Common names include Bumblebee Millipedes, Rainbow Millipedes, Gold Millipedes, Feather Millipedes, Fire Millipedes, Smokey Oak Millipedes and Yellow Banded Cherry Foot Millipedes. No list of world millipedes would be complete without at least mentioning the Giant African Millipede. True to their name, these amazing arthropods can measure up to 12 inches in length!

I hope you have enjoyed meeting the millipedes. There are endless other decomposers silently at work at Lost Lake including some pretty cool fungi, insects, bacteria, worms and much more. If you would like to learn more about some of these unsung forest heroes, consider joining Dinosaur Hill Naturalists at the October 17 Lost Lake Open House, [Rot and Decay](#). See page [13](#).



Millipede. Image 3.

Image 1-"[Millipedes, Leopold Pines, UW Arboretum](#)" by [benet2006](#) is licensed under [CC BY 2.0](#) ; Image 2-Prosthetic Head, CC BY-SA 4.0 <<https://creativecommons.org/licenses/by-sa/4.0/>>, via [Wikimedia Commons](#); Image 3-Millipede (*Ptyoiulus sp.*) by [sankax](#) is licensed under [CC BY-NC 2.0](#)



## Fall 2021 Natural Areas Stewardship Events

Please come out and join us for one of these events! Updated information and any last minute changes to these events can be found on our Natural Areas Notebook website at [oaklandnaturalareas.com](http://oaklandnaturalareas.com).

\*All minors must have a waiver signed by a guardian, and minors under 14 must be accompanied by a guardian.

### Seed Collecting & Cleaning

Many native plant seeds are only available for collecting for a few weeks in the fall, so we need as much help as possible during harvest! Seed collecting is a fun, relaxing way to learn new native plant species while experiencing unique natural areas. We use the seed to restore areas where we have removed invasive plants. All workdays are 12:30 - 3:30 pm.

#### Seed Collecting.

Meet at the Paint Creek Cider Mill before heading to our site for the day.  
Tuesdays in October (5, 12, 19 & 26).

#### Seed Cleaning.

Meet at Watershed Ridge Park,  
1720 W. Buell Rd.  
Thursday, December 2.

### Land Stewardship Workdays

The special natural areas at Bear Creek Nature Park and Paint Creek Heritage Area – Wet Prairie provide habitat for wildlife and a haven for native plants. We will be removing invasive shrubs this fall and spreading seed, setting the stage for more beauty next year! Tools and training will be provided. All workdays are 9 am to 12 pm.

October 1 –

Bear Creek Nature Park,  
740 W. Snell Rd.

We will be partnering with Six Rivers Land Conservancy for this workday!

November 2 and 16 –

Bear Creek Nature Park,  
740 W. Snell Rd.

### Weekly Bird Walks

Join us every Wednesday from September through November 17 for our weekly bird walks. We want to document the bird species using our parks so that we can work to improve their habitat. Walks will start at 8:30 am. Extra binoculars are available.

1<sup>st</sup> Wednesday of month – Bear Creek Nature Park

2<sup>nd</sup> Wednesday of month – Cranberry Lake Park

3<sup>rd</sup> Wednesday of month – Charles Ilsley Park

4<sup>th</sup> Wednesday of month – Draper Twin Lake Park

5<sup>th</sup> Wednesday of September – Stony Creek Ravine Nature Park



By Cam Mannino. A selection of about 25-30 Barn Swallows perching on the fence around the southern restoration area below the Lookout Hill at Stony Creek Ravine Nature Park.



### Natural Areas Information at your Fingertips!

Have you checked out our blog recently? The [Natural Areas Notebook](#) has the latest about what's happening in the parks, news about the latest stewardship work, and up-to-date information about stewardship events. Find this and much more at [oaklandnaturalareas.com](http://oaklandnaturalareas.com).



## Thank-you to our Land Stewardship Crew!

A big thank-you to Max Dunn, Katri Studtmann, and Parker Maynard for their great work this summer on our land stewardship crew. Together the crew pulled thousands of pounds of garlic mustard, collected native plant seed, installed new wildflowers in natural areas, controlled many acres of invasive plants, and did water quality monitoring in our lake. Each crew member contributed their skills and background to help us enhance and restore our natural areas. We are so thankful for them. Good luck in your future endeavors!

If this position sounds like fun to you, consider applying for the 2022 crew! Look for the job announcement this winter on our website.

This summer our technicians wrote posts for our natural areas stewardship blog at [oaklandnaturalareas.com](http://oaklandnaturalareas.com). Check out the intro paragraphs for a few of their posts from earlier this year, and visit our [website](#) to read more!

### Jack-in-the-Pulpit: What's Under the Hood? *By Max Dunn*

Over the past few weeks, the stewardship crew has been hard at work pulling garlic mustard. As we grid the parks for these pesky weeds my eyes are also searching for Jack-in-the-Pulpit. Since we are walking every square inch of the parks to eradicate garlic mustard, I figured I should take some time to appreciate another plant. Life is all about balance, right? Jack-in-the-Pulpit (*Arisaema triphyllum*) is a widespread, eccentric perennial of woodlands that varies greatly in pigmentation, alters its sex overtime, and holds insects captive.



Pigmentation ranges from pastel green to dark green and waxy maroon



Volunteers and natural areas stewardship staff ignite the fields at Bear Creek Nature Park.  
By Cam Mannino

### Prescribed Burns for Healthy Habitat, *By Parker Maynard*

I can't think of a more interesting and exciting way to start the stewardship season than by learning how to light up controlled fires to maintain the beauty of Oakland Township parks. Throughout late April and early May, the other Stewardship Crew members and I were involved in a unique hands-on training experience by participating in several prescribed burns. With the help of volunteers and contractors, areas within several parks underwent changes that will maintain and improve habitat and help native species thrive. As someone who has long been interested in the process of prescribed burns but has never had the chance to participate in one, I can easily say this was one of the most memorable stewardship activities I've participated in.

### Summer Resident Birds in Oakland Township, *By Katri Studtmann*

As winter turned to spring and the days got longer and warmer, I started to get excited because I knew our summer residents were on their way back from their southern wintering grounds. As their sweet songs rang again in my neighborhood, I knew spring was on its way. Where I grew up in Minnesota, the first birds back that I typically noticed were the American Robin and the Red-winged Blackbird. Every spring, my family has a contest on who will see the first robin. There are rules to this contest, of course, you must either have photo proof of the robin or someone must be able to vouch that you saw it, otherwise it does not count. My dad took the title this year, spotting and sending a picture of a robin on February 27th. Here in warmer climate of Oakland Township in southeast Michigan, American Robins are year-round residents.



A White-crowned Sparrow at Charles Ilesley Park, 2017.  
By Cam Mannino





## Nest Box Monitoring and Our Citizen Scientists

By Grant Vander Laan

If you frequent our Oakland Township parks, you might notice bird nest boxes in a few parks. Several times a week, volunteers monitor these boxes for our Natural Areas Stewardship program using the protocols from the Cornell Lab of Ornithology NestWatch program. This program's aim is to study the trends and conditions of the breeding bird populations across the United States. These trends can help show the results of climate change, loss of habitat, and effects of invasive species. We are only able to perform this monitoring because of our amazing volunteer citizen scientists. A big thank-you to all of our volunteers as they devote time twice a week during the summer to this project. Without their hard work and dedication to monitoring these boxes, we would not be able to contribute to the [NestWatch](#) program.



A bluebird pair with food for young on their nest box at Charles Ilsley Park. Photo by Cam Mannino.

Currently we have [boxes](#) in Bear Creek Nature Park, Charles Ilsley Park, Draper Twin Lake Park, and along the Paint Creek Trail. We only install boxes when we know that we'll have volunteers to check and maintain them. Nest boxes that aren't maintained can be traps where birds are more easily taken by predators, or they can be breeding sites for invasive birds like House Sparrows and European Starlings. We chose nest box locations after deciding which native birds we wanted our boxes to benefit. For example, an **Eastern Bluebird** (*Sialia sialis*) requires open space to nest, while a **Black-capped Chickadee** (*Poecile atricapillus*) prefers edges or forests. We are mostly working to benefit Eastern Bluebirds and Tree Swallows, so we placed nearly all of our nest boxes in open fields. The boxes are paired to help bluebirds and swallows fend off nest predators and invasive species.

During the breeding season volunteers visit the nest boxes about two times per week. At each visit they check to see if a nest box is being used. If in use, they document the bird species, number of eggs, number of young, and other relevant details. The volunteers also maintain the nest boxes during the summer and clean out the boxes in the winter to prepare for new inhabitants the following year.

While all of the volunteers are amazing and we appreciate every last one of them, we wanted to spotlight two particular volunteers, Donna and Louise. They have been monitoring nest boxes at Draper Twin Lake Park since we began the program in 2018. I recently had the opportunity to join Donna on her monitoring trip out to Draper Twin Lake Park. She describes her time nest box monitoring as time well spent. She wants to spend her days doing something of quality and continuing to learn. That drive for more knowledge is what pushed Donna to volunteer with us. One of her favorite moments is when the young leave the nest, as she can now watch them grow and mature into adults. When I asked if she had any tips for people who were considering monitoring nests or setting up boxes of their own, her advice was to be courageous and most importantly be respectful. The data collection is secondary to what is actually happening in the nest.

Another great volunteer I wanted to highlight is Donna's partner volunteer at Draper Twin Lake Park, Louise. She started monitoring with us because she wanted to help out our stewardship department however she could. Before monitoring with us, she already had two years of experience doing this in her backyard, where she grew

(Continued on page 18)



## Nest Box Monitoring... (Continued from page 17)

particularly attached to [barn swallows](#). Despite the time commitment, she has continued to monitor at Draper because she loves doing it and loves to see the prairie change throughout the season. She takes notes on the different things she sees, and uses the information learned to help restore her own personal property.

One of Louise's favorite moments, besides working with Donna, happened one day when she was walking with her husband, Jim at Draper. They saw a pair of sandhill cranes with juveniles poking their heads out of the grass in the northeast prairie planting. When I asked Louise if she had any tips for new monitors, she advised people to take full advantage of all of the great resources that Cornell Lab of Ornithology has to offer. She also encouraged folks to talk to other birders, who generously pass along good insights and knowledge. Donna and Louise's heart for nature, and dedication to observing what is happening in it, makes them the ideal volunteers! We would like to thank them and the rest of our citizen scientists who monitor for us each year!

The NestWatch program is not just confined to organizations like Oakland Township Parks or research groups - it can also be done in your own backyard with little to no equipment necessary! If you simply have the [NestWatch app](#), you can observe nests found in your own backyard. Data from one nest in your backyard might seem insignificant. However, if done correctly, consistently, and combined with the many observations of other citizen scientists, your nest data can be of great use. If you would like more information as to how to monitor in your own backyard, check out the NestWatch website at [nestwatch.org](http://nestwatch.org). Nests can be in nest boxes, like ours, but you can also monitor open cup nests, nests in natural tree cavities, or any other nests you find.



Donna checks her nest boxes in the prairie at Draper Twin Lake Park.

## THANK YOU!



### Natural Areas Stewardship Volunteers Summer 2021

Cam Mannino, Louise Hartung,  
Jim Fostey, Laurie Peklo,  
Tom Korb, Donna Perkins,  
Kathleen Dougherty, Patrick Falle,  
Yachiyo Falle, Maryann Whitman,  
Jon Reed

### Volunteers Needed!

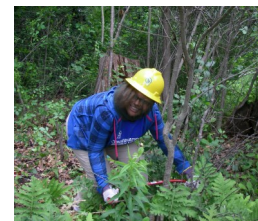
Would you like to learn new skills, work with a great team, and get more involved in local conservation? Our natural areas stewardship volunteers help with bluebird nest box monitoring, native seed collecting, prescribed fire, invasive species control, photo monitoring, pollinator garden maintenance, outreach, and more! We fit opportunities to your availability and interests. No special skills required. We'll provide all training and tools you'll need. To learn more contact Natural Areas Stewardship Manager Ben VanderWeide ([bvanderweide@oaklandtownship.org](mailto:bvanderweide@oaklandtownship.org)).



## Notes on the Land Stewardship Toolbox

Our township is proud of its parks with plenty of natural areas, trails for hiking, and space for native plants and animal to thrive. Part of our responsibility at Oakland Township Parks is managing our parklands to keep them healthy. For natural areas stewardship we use integrated pest management, or IPM, to guide the decisions we make about preventing and suppressing pests. These pests are typically invasive plants, but could be insects, plant diseases, animals, or microorganisms. The goal of integrated pest management is to control these pests in a way that is effective, while also protecting people and the environment.

Our first tool is prevention. For the invasive fungus [oak wilt](#), we only prune oak trees and do other work that might damage oak trees between October and early March when there is no risk of spreading the disease. During the growing season the risk for spreading oak wilt is high. If we need to trim an oak tree during the growing season, for example due to storm damage, we immediately seal the cut surface. Controlling an oak wilt outbreak, or any other new pest, can very expensive and disruptive. Prevention is best.



When there are existing areas of invasive plants in the parks, we try to use all the tools available to us - mechanical, cultural, physical, and biological control methods - before we use herbicides. Our goal is typically not to eliminate all of the invasive plants, but to keep them below a threshold that causes harm to our natural communities, or impairs our enjoyment of the parks. For species like garlic mustard, wild parsnip, and teasel, we hand pull or dig plants. We'll often mow spotted knapweed and sweet clover when they are in peak flower, which prevents them from setting seed and may also kill some plants. We use prescribed fire to encourage our native, fire-adapted plants while also discouraging invasive plants that are not fire tolerant. Unfortunately, these methods aren't effective for controlling Phragmites, swallow-wort, crown vetch, and many of our invasive shrubs.



In some areas of the parks we lease out fields to be farmed. Farming keeps the fields free of invasive species until we restore them with native plantings, and it preserves examples of our agricultural heritage in the township. Last fall we stopped farming several areas of our farm fields that are steep and prone to erosion, or were too wet to be farmed. [Wetland restorations](#) and native prairie plantings, funded by the Land Preservation Millage and a grant from the US Fish and Wildlife Service, continue to be installed to keep the soil in place, filter water, and provide wildlife habitat.



Through the Oakland County Cooperative Invasive Species Management Area ([CISMA](#)), we're involved in efforts to use more biological controls for invasive plant management. The insects or other organisms used in biological control are tested extensively to make sure they only target the host plant before we can use them in our parks. We've used [Gallerucella beetles](#) as biological control for purple loosestrife, and we are helping researchers from Michigan State University to test a biological control for [swallow-wort](#).

If other methods aren't effective, we carefully select the least toxic herbicide that will control the target species. We consider the safety of people applying the herbicides, the safety of park users, effects on non-target species, and what happens to the herbicide in the environment. Finally, we evaluate our control methods to make sure they are effective, and make changes if needed. If you have questions or would like to learn more contact us at [stewardship@oaklandtownship.org](mailto:stewardship@oaklandtownship.org), or 248-651-7810. Immediate park neighbors can request to be notified of nearby herbicide applications.



## **NOTICE 2021 Invasive Plant Control Planned Along Major Oakland Township Roads**

To maintain environmental quality and public health and safety, the Road Commission for Oakland County (RCOC) and various local governments, working with the Oakland County Cooperative Invasive Species Management Area, will treat the invasive plants [knotweed](#) and [Phragmites](#) along major Oakland County roads from **August through October 2021**.

Phragmites grows in wet areas and can reach heights of 15 feet, leading to safety and environmental problems. It forms dense stands blocking views at intersections, impedes water access, impairs drainage, damages infrastructure, crowds out habitat and causes hot, damaging fires if ignited. Knotweed spreads easily when cut and can damage infrastructure including buildings and roads.

Areas for treatment include Oakland County primary, local and natural beauty roads in Addison, Bloomfield, Brandon, Commerce, Groveland, Highland, Holly, Independence, Lyon, Milford, Oakland, Orion, Oxford, Rose, Springfield, Waterford, West Bloomfield and White Lake townships; and the communities of Auburn Hills, Beverly Hills, Birmingham, Bloomfield Hills, Clarkston, Farmington, Farmington Hills, Franklin, Holly, Lake Angelus, Leonard, Madison Heights, Novi, Orchard Lake Village, Ortonville, Pontiac, Rochester, Rochester Hills, South Lyon, Southfield, Troy, Walled Lake, Wixom and Wolverine Lake.

The contractor listed below will perform the knotweed treatment and can be contacted with questions about the chemical products used and method of application:

- Cardno Inc., 11181 Marwill Ave, West Olive, MI 49460, 616-847-1680, [www.cardno.com](http://www.cardno.com)

The contractors listed below will perform the Phragmites treatment and can be contacted with questions about the chemical products used and method of application:

- PLM Lake and Land Management Corp, 10785 Bennett Drive, Morrice, MI 48857, 800-382-4434, [www.plmcorp.net](http://www.plmcorp.net)
- Cardno Inc., 11181 Marwill Ave, West Olive, MI 49460, 616-847-1680, [www.cardno.com](http://www.cardno.com)
- GEI Consultants of Michigan, 5225 Edgewater Drive, Allendale, MI 49401, 616-384-2710, <https://www.geiconsultants.com/>

[Michigan Department of Environment, Great Lakes and Energy \(EGLE\)](#) permitting restrictions, national holidays and/or weather conditions may influence the timing of treatments. The treatment schedule is approximate. Please watch your property if you are adjacent to planned treatment areas for the posting of the 8.5x11 inch, yellow signs. The signs will indicate the date of the treatment, the products used and any restrictions on the use of treated property.

This notice is being circulated in accordance with EGLE procedures. Herbicides that may be applied and the associated use restrictions are listed below. On the day of treatment, signs will be posted that indicate what products were used and specific restrictions that apply:

### **Herbicides Planned for Use on knotweed:**

Clearcast (Imazamox) and Rodeo (Glyphosate) or Aquaneat (Glyphosate) or Roundup Custom (Glyphosate), and Cygnet Plus as an adjuvant (drift control, surfactant)

### **Herbicides Planned for Use on Phragmites:**

Aquaneat (Glyphosate) or Roundup Custom (Glyphosate) or Glyphosate 5.4 (Glyphosate) or Rodeo (Glyphosate), and Cygnet Plus as an adjuvant (drift control, surfactant)

### **Method of Application:**

All applications will be foliar applied by vehicular mounted hand spray gun equipment or backpack spray equipment. The herbicide will be tank mixed.

### **Re-Entry Restrictions:**

Do not enter treated areas until the spray has dried.

This advance notification is a requirement that a commercial applicator must make before a broadcast or foliar application of pesticides for community or right of way pest management to persons who own or reside on property that is within the target area or to their authorized representatives. Prior notification shall be provided by the commercial applicator or his or her agent.

The chemicals used for Aquatic Nuisance Control are registered by the [U.S. Environmental Protection Agency \(EPA\)](#) and the [Michigan Department of Agriculture](#). The potential for damage to fish and other nontarget organisms is minimal when the product is used as directed on the product label and the permit.

To minimize the possible effects on health and the environment, the treated area is restricted as noted above.

**For more information, contact the [Road Commission for Oakland County](#) at 31001 Lahser Road, Beverly Hills, MI 48025; by phone at 877-858-4804; or by e-mail at [dcsmail@rcoc.org](mailto:dcsmail@rcoc.org).**

# HAVE YOU VISITED YOUR HISTORIC PARK LATELY? CRANBERRY LAKE FARM HISTORIC DISTRICT



**Story Garden Grand Opening with Plein Air Art Show**  
**Fri. Sept 10 from 2pm to 5pm (rain date Sat.10am to 1pm)**  
**You are invited to join us in celebrating our history!**

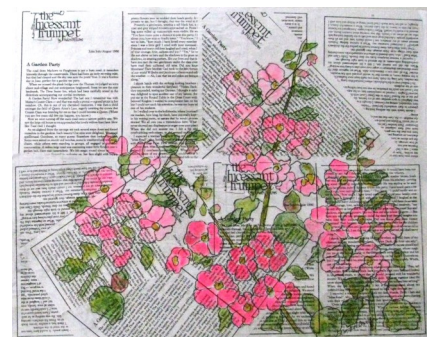
We have developed a garden in honor of Helen S. Williams known as the ‘Pied Piper of Reading’ and ‘The Story Lady.’ Helen lived at CLF in 1948-1949. The garden’s theme focuses on Helen’s favorite books. She later moved to Rochester and opened 'The Book Stall', a children’s book store. Her dedication and enthusiasm for children’s literature was outstanding.

Special thanks to St. Paul’s United Methodist Church Youth Group that worked very hard on this garden as their work trip. We are also thankful for the many donations from friends, Historic District Commissioners, Parks and Recreation, and Oakland Township Historical Society.

The Plein Air painters have also been busy at [CLF](#). Helen’s *The Incessant Trumpet* essay collection, *A Garden Party* was interpreted by the artists. Great artwork will be on display!

What a better way to celebrate than having a **free children’s book** for each family to choose -while supplies last! If you bring a tea cup, we will fill it with cider or tea while you relax to story time.

*Artwork from left: Bobbie Tarbunas, Sigrid Grace, Janet Almstadt-Davison*



# HAVE YOU VISITED YOUR HISTORIC PARK LATELY? CRANBERRY LAKE FARM HISTORIC DISTRICT



Oakland Township welcomes Kurt Kehren, Jr., who has been working at CLF on the landscaping and maintenance. He is taking care of the grounds so when you are out for your next hike through the historic grounds, say 'Hi' to Kurt!

About Kurt: "I enjoy being in the outdoors and fixing things. I am a recent 2021 senior from Stoney Creek High School. I ran Track and Cross Country my four years of High School. My family of six live in Oakland Township. In my free time I enjoy boating, running cross-country and running in various 5k races. I will be studying Mechanical Engineering in the fall at Michigan State University." We are thrilled to have Kurt working for us!



Also, if you are looking for some community service hours, we will be happy to assist with directions for what needs to be watered, weeded or planted!



## MOVABLE HERB GARDEN

Designed and built by Adriana Dimovski for her Silver Award Girl Scout project. The shelves are made from cedar and can be lifted to move the structure. There are many variety of herbs from dill, oregano, basil, mint, and chives. She researched herbs and scents from the 1840s thru the 1940s. These herbs are generously available to the public, so please help yourself to collecting a portion of the greens by taking a cutting.

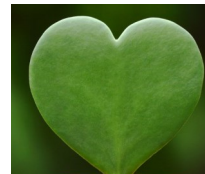
Thank you Adriana for bringing an herb garden back to CLF. In the future, we plan to develop herb gardening techniques and cooking programs.

## More Gardens! Coffins Heritage Horseshoe Garden

Many volunteers have been generous and brought out perennial plants for several garden areas around the main house. The Heritage horseshoe garden is so named as it is the shape of a horseshoe. Howard A. Coffin could see this vista from his porch when he lived at the farm in the late 1930s. Huge thanks to our plant donors Christina Wolf, Mary Tischler, Jean Kroger, Maryann Whitman, Colleen Barkham, Jeanne and David Phillips, Barb Barber, and Kara Ferrara.

We have hoses nearby, so if you stop out and see that a plant or two is in need of water, feel free to use our hoses! And we thank you too! As the saying goes...

**Our garden is Your garden!**



**Back by popular demand, with music by The Ruffwater Stringband coming to play their tunes on Friday Sept 17 from 6pm to 8pm.** During this festive time, the Oakland Township Historical Society will be offering their Flumerfelt Flea Market, so come by for a grand time and leave with something in your hearts! (*Early bird sales admission \$5*) The flea sale runs all weekend from Sat 10am to 5pm and Sunday from 12am to 5pm. **Reminder to bring a picnic dinner and a blanket, you can relax on the lawn to the sounds of the band!**

# HAVE YOU VISITED YOUR HISTORIC PARK LATELY? CRANBERRY LAKE FARM HISTORIC DISTRICT

## Welcome 1927 Milk House to CLF

Elmer L. Beardsley, a prosperous farmer, purchased the farm at 1001 W. Buell Road that became known as Long Lane Stock Farm. He built the milk house and a windmill to draw water from the ground, which cooled the milk cans that were placed in a concrete trough. Delivery trucks would come pick up the fresh milk and cream and take them to market. We have an Eagle Scout candidate working on this buildings restoration needs, so stay tuned for future milk house stories! We hope to have it open by late fall. The structure was moved by Bloomingdale Contracting, and weighed 38,400 pounds! Generous thanks to the Charles, Loyal, and William Eldridge family for their donation for moving the historic structure to our historic farmstead. The original milk house at CLF was lost to fire in 1984.



## ARE YOU UP FOR DOWN ON THE FARM?



Save the date: Sat. Oct 2nd, 11am to 2pm

Chickens, horses, donkey, free pumpkin for painting, music, tractors, hay rides, art displays, apple picking, beekeeping, games, farriers, blacksmiths, spinners, quilters, and more! In partnership with **Oakland Township Historical Society** with donations from Parks & Recreation and Oakland County Parks.



## TEND: Strengthen, Sculpt, Connect

We would like to thank Patti McGowan, certified personal trainer, who ran a free program to benefit the Story Garden. We will be offering this again Aug 5, 12, and 19 for a fee of \$12.50 per class. Strengthen and energize your body with this non-impact, Isometric-based fitness program, using only your own body weight and proper body position to improve balance, flexibility and posture. Join us for this unique experience! Please call 248-608-6807 or email [bbarber@oaklandtownship.org](mailto:bbarber@oaklandtownship.org) to register.



**Cranberry Lake Farm** is open for your enjoyment, relaxation, and exercise. Walk the grounds and see the history on display, with old implements, stone barbeques, picnic areas, and scenic surroundings. Located at 388 West Predmore Road in northern Oakland Township. The sixteen acre historic district is listed in the National Register of Historic Places and represents a rural farmsteads evolution into a recreational retreat. Open dawn to dusk for hiking the grounds. For more information, please contact the Historic District Commission <http://bit.ly/OTHDC> or [bbarber@oaklandtownship.org](mailto:bbarber@oaklandtownship.org) or office land line 248-608-6807. Follow us on Facebook @CLFdistrict.



**Wednesday, September 1, 2021**

6:30 pm CLF Barn

**Autumn Pot-Luck Dinner and Return To Normal Celebration**

We've been unable to hold meetings for over a year and a half, so we are in the mood for celebrating! Join us for our annual Autumn Pot-Luck Dinner. We thought we'd spend the evening socializing and telling each other stories rather than bring in a presenter. I'm sure we all have a lot of stories to share with each other!



**Wednesday, October 27, 2021**

7:00 pm CLF Barn/Main House (depending on the weather)

**Movie and Popcorn Night – The Majestic with Jim Carrey**

Join us for movie night – popcorn and beverages will be provided. The Majestic is a movie about a man suffering from amnesia who finds himself welcomed by a small town who believes him to be a long-lost WWII veteran. He settles into his “new” life and starts to restore The Majestic, an old, abandoned movie theater.



**Wednesday, November 3, 2021**

7:00 pm PCUMC

Parking available next to the church in the Dentist's office.

**"Rochester Mural Restoration" by LaVere Webster.**

The Rochester Mural, located in the Rochester Community Schools Administration Building, has been called the most important Historic Art of Oakland County, portraying images of the Park Davis Farm where the polio vaccine was produced, the Ferry Seed Experimental Farm, and Rochester Area Schools. A Federal Art Project and dated 1938, the Mural was covered up for many years and nearly destroyed in a remodeling project a few years ago. Three pieces of it were lost, and only one was found. Fortunately, the cleaning process uncovered the name of the artist, and the Smithsonian had an 8 x 10 photo. An HD disk of the photo from the Smithsonian was used to do a printing of the two missing parts. The restoration project lasted 4 years before it was presented to the community in 2011.



*LaVere Webster is a professional Conservator of Art, and luckily he retired locally and was available to work a miracle on the Mural. The mural was nearly lost forever. LaVere's Conservation/Restoration Work can be found in many Museums and Private collections.*

*(Continued on page 25)*

**JOIN US AT THESE SPECIAL EVENTS!**

**Flumerfelt Flea Preview and Music at Cranberry Lake Farm**

Glen Morningstar and the Ruffwater String Band  
Fri Sept 17, 2021  
6 – 8 pm

**Flumerfelt Flea**

Sept. 17th, 5-8pm,  
Presale, \$5 donation  
Sat Sept 18, 2021  
10 am – 5 pm  
Sept. 19th, Noon-5

**Goodison Good Tyme**

Sat Sept 18, 2021  
11 am – 2 pm

**Down on the Farm**

Sat Oct 2, 2021  
11 am – 2 pm

**Appraisal Workshops**

Oct 6, 13, 20, 27,  
2021 –  
10-12 Noon  
\$10  
Cranberry Lake Farm



**Flumerfelt Flea Market Returns!**

*To benefit the preservation of Oakland Township History by OTHS Please contact Colleen Barkham, 248-562-0712 if you have items to donate.*



# OTHS Program Schedule

(Continued from page 24)



## Wednesday, December 1, 2021

6:30 pm PCUMC

Parking available next to the church in the Dentist's office.

Bring a dish to pass for the potluck – Christmas goodies and appetizers welcome!



### "The Good Roads Movement in Michigan" by Jim Craft, Annual December Potluck and Program Followed by Christmas carol sing-along

In 1890 the United States had, perhaps, the worst road system of any developed country in the world. Impassable three or four months a year due to muddy conditions, the balance of the year roads in America were dusty, rutted and disjointed serving only very local functions. By the mid 1920's the United States had developed a well-funded system that integrated local, state and Federal governments to create the massive road network we take for granted today. While the story is national in scope, the presentation will focus on Michigan to answer three key questions: Why were roads in America so bad in 1890? What caused the change? What were the principle steps that were taken to relate an effective road system in America and Michigan?

Along the way, we will discuss the importance of the bicycle, the Model T and the Liberty truck. Among other things we will explain why Van Dyke is named the Earle Memorial Highway, the origins of the Dixie Highway and the central, though often negative, role American farmers played in the Good Roads Movement.

*Jim Craft is on the board of the Oakland County Historical Commission and retired history teacher.*

After the program we will have our traditional Christmas carol sing-along.

Pot-lucks are in the Cranberry Lake Farm (CLF) Flumerfelt Barn at 384 W. Predmore Rd in Oakland Township. November, December and March programs are at the Paint Creek United Methodist Church (PCUMC), 4420 Collins Rd. A bad snow storm will mean that we would cancel our program and reschedule it. Join our Society to stay on our mailing list and receive more information about program location, time and details.

**WE WELCOME NEW MEMBERS.** The public is welcome to our programs. There is no charge for our programs. For program information or to submit program ideas and speaker suggestions, e-mail Mary Tischler, Program Chairperson, [marytischler@comcast.net](mailto:marytischler@comcast.net). For membership or other information contact Sue Fox, Membership Chairperson, (248) 693-9646.

Visit our Facebook Page @othsmi or our website: [www.oaklandtownshiphistoricalsociety.org](http://www.oaklandtownshiphistoricalsociety.org)

## Learn from an Expert

Do you have items you have inherited and wonder if they are worth anything? Would you like to learn more about antiques collectables? **We have the workshops for you!**

LaVere Webster, conservator and restorer of art and antiques, will lead us in a series of workshops to learn about various antiques and collectables. LaVere has a long background in historic preservation and has received Michigan's highest preservation award for the conservation of the Rochester Community School's mural. Join us this October at Cranberry Lake Farm as we listen to the knowledgeable Mr. Webster and share our own stories of family legacies. The workshops will cover antique glass (before 1932), antique chairs and the periods of furniture styles, the conservation and restoration of oil paintings and antique/collectable clocks.

**Dates:** October 6, 13, 20, and 27      **Time:** 10 AM to Noon      **Cost:** \$10

**Where:** Cranberry Lake Farm, 384 W. Predmore Rd, Oakland, MI 48363



Workshops in main house.      Parking in lot behind barn. Handicap parking along driveway.

**Registration:** You may send a check to our OTHS Treasurer, Sue Fox: 384 W. Predmore Rd., Oakland, MI 48363, or contact Colleen Barkham via email to secure your spot: [thsarkham@hotmail.com](mailto:thsarkham@hotmail.com)



## 14<sup>th</sup> Annual Labor Day Bridge Walk and Run

Monday, September 6, 2021



2018 Labor Day Bridge Walk and Run

Join us for our 14<sup>th</sup> annual Labor Day Virtual Bridge and Run! We're very excited to be holding this event again after a two-year hiatus. Starting at the Rochester Municipal Park Kiwanis Pavilion, participants can choose either a 1 mile walk or 5k run on the Paint Creek Trail. Onsite registration starts at 8:00 a.m. and the event begins at 9:00 a.m.

This is a free community event, with a suggested donation of \$5.00. Online registration will open in mid-August at <http://paintcreektrail.org/wordpress/events/labor-day-bridge-walk/>.

Join us for giveaways, family fun, and delicious treats! All attendees will receive a purple coneflower seed packet (support those pollinators!) or Paint Creek Trail logo sticker while supplies last. Sponsorship opportunities are still available. Contact the Trail office for more information on how you can support this wonderful family-friendly event!

*(Continued on page 27)*



[facebook.com/PaintCreekTrail](https://facebook.com/PaintCreekTrail)



[twitter.com/PaintCreekTrail](https://twitter.com/PaintCreekTrail)



[PaintCreekTrail.org](https://PaintCreekTrail.org)



(Continued from page 26)

## Detroit Institute of Art Inside | Out Program Now on Display



*The Trappers Return* at Adams Road crossing

The Paint Creek Trail and the Polly Ann Trail are hosting the Detroit Institute of Art's popular Inside|Out program this year. A total of eight reproductions have been placed at sites along both trails as well as along the new Clarkston Road connector in Orion Township.

The artworks have been placed within walking or biking distance of one another allowing trail users to enjoy a pleasant day out on the trails. Pieces will be located in the Village of Oxford, Orion Township, the Village of Lake Orion, and Oakland Township. An interactive map showing the exact locations of the artwork is available on the DIA's website for the duration of the installation now through October. For more information, visit <https://www.dia.org/insideout>.

(Continued on page 28)



# Six Rivers Land Conservancy News

Join Six Rivers on Wednesday, September 29, 2021 at the Paint Creek Cider Mill for our annual Conservation Celebration! From 6 to 9 PM, Six Rivers will celebrate the year’s many accomplishments with a party! We will have bratwurst, hotdogs, potato salad, beans, and more! And no party would be complete without assorted adult beverages!

As part of the festivities, we’ll vote for our 'Nature Near You' photo contest People’s Choice winners, and announce the Staff Appreciation and Volunteer of the Year awards. We’ll have a silent auction and raffle, with proceeds benefiting Six Rivers’ mission of conservation.

Spend an autumn evening with Six Rivers at the Paint Creek Cider Mill in Rochester and help us celebrate a successful year of conservation!



When: Wednesday, September 29, 2021 6:00 PM – 9:00 PM

Where: Paint Creek Cider Mill, 4480 Orion Road, Rochester, MI 48306

Cost: \$25 suggested donation per person. You can prepare at <https://www.sixriversrlc.org/donate>

## We hope to see you on September 29!

Six Rivers is grateful for all the support we’ve received throughout 2021, and we are pleased to have the opportunity to celebrate that support and our accomplishments at this fall event. Please RSVP by September 25 by calling (248) 601-2816 or email [info@sixriversrlc.org](mailto:info@sixriversrlc.org).

*"We conserve, sustain and connect natural areas, lands and waters that make the places we live special."*

## Trail Courtesy

(Continued from page 27)



As a reminder, please continue to be courteous to others while out on the trail:

**Cyclists – Pass with care: Stay to the right, pass on the left:** “Do the right thing – pass with a ring!” Please announce with a verbal “on your left” or ring a bike bell.

**Pedestrians and Cyclists – avoid spreading out:** Please don’t block the width of the trail. Stay to the right, and watch your surroundings – a cyclist may be trying to pass you on the left. Cyclists and pedestrians must both yield to horses on the trail.

**Cyclists – Please use safe speeds on the trail:** Cyclists should adapt their speed to conditions and others on the trail. Bicycle racing and race training is not allowed.

**Obey all Signage:** Please remember to obey all street signs, signals, and road markings on the trail and at intersections. Always stop and look for approaching vehicles before crossing roads.



[facebook.com/PaintCreekTrail](https://facebook.com/PaintCreekTrail)



[twitter.com/PaintCreekTrail](https://twitter.com/PaintCreekTrail)



[PaintCreekTrail.org](https://PaintCreekTrail.org)

# Parks and Recreation Team Update

PARKS & RECREATION  
WORKER



John McDowell joins the Parks and Recreation team as a Parks and Recreation Worker. John will oversee soccer game field set-up and sled hill monitoring. John has been a resident of Oakland Township since 2016 and loves the parks and trails the Township has to offer. John can be found daily on the Paint Creek Trail walking his golden retriever. John's experience includes years of golf course management in Livonia and property management with a local realty company. John is married to Naunie and shares 5 kids, 5 step-kids, 12 grandchildren, and 2 (almost 3) great grandkids. Welcome aboard John!

ASSISTANT ARCHERY  
INSTRUCTOR



Brooke Patrician, a sophomore at Rochester Adams High School, is a United States competitive archer. She started archery when only 8 years old, advancing through Oakland Township Parks and Recreation's archery classes. Brooke is now a Level 1 Archery Instructor, holds two state records and also is on the Regional Elite Development Team with USA Archery, ranking 39th out of 150 in the United States for Compound Cadet Female. Welcome to the team Brooke!

## Full Steam Ahead at Paint Creek Junction Park (Continued from page 2)

The Township's project contractor, Premier Group Associates ([PGA](#)), has been making steady progress including grading and installation of aggregate surfacing at the entrances, parking lot, and connector pathway; installation of the rain garden that will capture stormwater runoff from the parking lot; and installation of the well for drinking water. Near-term remaining tasks include pouring concrete and asphalt paving. Later this fall, final tasks will include the installation of the prefabricated restroom building, final landscaping, signage, a picnic table and a bike rack.

Paint Creek Junction Park's 35-space parking lot with horse trailer parking and connection to the [Paint Creek Trail](#) is projected to open to the public in late fall 2021.

The development of facilities at Paint Creek Junction is funded by leveraging Oakland Township's Parks and Recreation Millage against grants from the [Michigan Natural Resources Trust Fund](#), [Ralph C. Wilson Jr. Legacy Funds](#) at the [Community Foundation for Southeast Michigan](#), and the [Ralph C. Wilson, Jr. Foundation](#); and a donation from the [Friends of the Paint Creek Trail](#).

## It's All About That Bark (Continued from page 4)

*Sue M. Neal, Dinosaur Hill Nature Preserve*

What is most interesting is that each strategy (thick and rough versus thin and smooth) comes with its own tradeoff. Growing a very smooth bark means that the tree must grow that bark at a slower rate. The result of this is that an oak tree, with a thick and rough bark can grow its bark at about 4 times the rate of a beech tree. Not only can the oak grow more quickly overall, they are also able to repair damage from a broken branch or other injury much faster than a beech tree. This is important because any break in a tree's bark is a potential site for invasion by insects or diseases. On the other hand, the rough and cracked surface of an oak tree is the perfect habitat for a whole range of insects when compared to that of a beech tree. As a result, oak trees must expend a lot more energy producing tannins (which are NOT tasty) to ward off pests.

An observation as simple as the different textures of bark that you may notice while exploring your senses in the forest can send you on a whole really fun learning journey. Sensory walks can be very approachable and relaxing while also providing some very cool opportunities to learn much more about the nature right in your local parks. *See page 5.*

Image 1-Bark layers<<https://slideplayer.com/slide/7402405/>>; Image 2-Amsel, Sheri. "Beech (American)" Exploring Nature Educational Resource ©2005-2021. August 3, 2021 <<http://www.exploringnature.org/db/view/Beech-American>>; Image 3-Amsel, Sheri. "Birch (Paper)" Exploring Nature Educational Resource ©2005-2021. August 3, 2021<<http://www.exploringnature.org/db/view/Birch-Paper>>



Birch Tree. Image 3.



## Oakland Township Parks and Recreation

# Fall 2021 Registration Information

Register online: [oaklandtownship.recdesk.com](http://oaklandtownship.recdesk.com)

The health of our community is our priority. Our team of staff and instructors are trained in safety protocol that follow CDC guidelines and are equipped with Personal Protection Equipment and gear (PPE). For indoor programs the CDC recommends wearing face masks and 6 foot social distancing regardless of vaccination status.

**Oakland Township Resident** registration is open NOW!

*(This is for residents living within the Oakland Township boundary.)*

**Non-Resident** registration opens three weeks before the program start date.

*(As noted in the program descriptions)*

**Programs fill-up quickly so please contact us early!**

### Registration Options:

#### 1. ONLINE:

We encourage everyone to register online at: [oaklandtownship.recdesk.com](http://oaklandtownship.recdesk.com)

You can register for an Oakland Township program at any time, from anywhere you have an internet connection, using a credit card (MasterCard, Visa, or Discover). If you have questions feel free to call 248-651-7810 and we will be happy to walk you through the system.

#### 2. BY MAIL:

For printable registration and waiver forms visit our website:

[www.oaklandtownship.org](http://www.oaklandtownship.org)

Send the completed forms by USPS mail to:

Oakland Township Parks and Recreation

4393 Collins Rd.

Rochester, MI 48306

*Mail at least two weeks  
before program date!*

Or drop off your registration and waiver forms in the after hours DROP-BOX at Oakland Township Hall, 4393 Collins Rd., Rochester, MI, 48306.

Make checks payable to **Oakland Township Parks and Recreation**

#### 3. IN PERSON:

Visit us at our office location and register in person. You can pay by credit card (MasterCard, American Express, or Discover accepted with \$2.95 fee) or by cash or check. We are located at the Paint Creek Cider Mill Bldg. (2nd Floor) 4480 Orion Rd., Rochester, MI 48306

Registration and waiver forms must be signed by each registrant or (the parents/guardians of minor) to participate in our programs.

## Oakland Township Parks and Recreation Program Refund Policy

Registrants will receive a full refund for programs cancelled by Oakland Township Parks and Recreation. Registrants withdrawing more than 4 business days prior to the program start date will receive a refund, less a \$5.00 administration fee. No refunds will be made if withdrawing less than 4 business days from program start date. All registrants wishing to withdraw must do so during regular business hours Monday-Friday, 8am-4:30pm by phone at 248-651-7810 or by email at [knewton@oaklandtownship.org](mailto:knewton@oaklandtownship.org). Visit [www.oaklandtownship.org](http://www.oaklandtownship.org) for complete program information and other Park and Recreation information, permits, and ordinances.

## Controlled Archery Antlerless Deer Hunting at Stony Creek Ravine Nature Park (Other Township parks do not permit any type of hunting)



Oakland Township Parks purchased Stony Creek Ravine Nature Park in 2008 and 2019 with the majority of our purchase costs being paid by Michigan Natural Resources Trust Fund grants. One of the conditions of our receipt of these substantial grants was that we must allow controlled archery deer hunting at this park as part of the DNR's program to manage deer populations in southeast Michigan.

To meet this commitment, a limited number of hunters per hunt date will be issued Township permits for antlerless archery deer hunting at Stony Creek Ravine Nature Park on restricted weekdays between October 1, 2021 and January 31, 2022. On the days when hunting will occur the park will be closed to other types of use. Signs are posted at park entry points indicating these days of closure.

**To Participate in this controlled hunt program, Hunters must do the following:**

**Hunters must obey all Township regulations, State of Michigan hunting laws and display Oakland Township Parks and Recreation Permit tag on vehicle rear-view mirror.**

**Hunters must each hunt with a partner to participate in this program.**

**Hunters must provide their own portable blinds and will be responsible for their own field dressing and transporting of all harvested deer. No baiting of any kind is allowed.**

**Prior to hunting, Hunters must review a [power point presentation](#) about this Township hunting program.**

**Hunters will select their Hunting Unit (see safety zone map on next page) on a first-come, first-served basis, after both partners have submitted all application information.**

**Hunters must email an application for each hunting period, including a copy of your current deer hunting license, a copy of the identification used to purchase your deer hunting license (such as a driver's license), and a copy of the signed archery deer hunting waiver (found at <http://bit.ly/HuntOTParks>) to [knewton@oaklandtownship.org](mailto:knewton@oaklandtownship.org) .**

Questions about this procedure? Please call (248) 651-7810.

**Fall 2021 Stony Creek Ravine Nature Park Controlled Antlerless Archery Deer Hunting Application**

Name \_\_\_\_\_ Driver's License# \_\_\_\_\_

Address \_\_\_\_\_

City, State, Zip \_\_\_\_\_ Vehicle Plate# \_\_\_\_\_

Phone: Home \_\_\_\_\_ Work \_\_\_\_\_ Cell \_\_\_\_\_

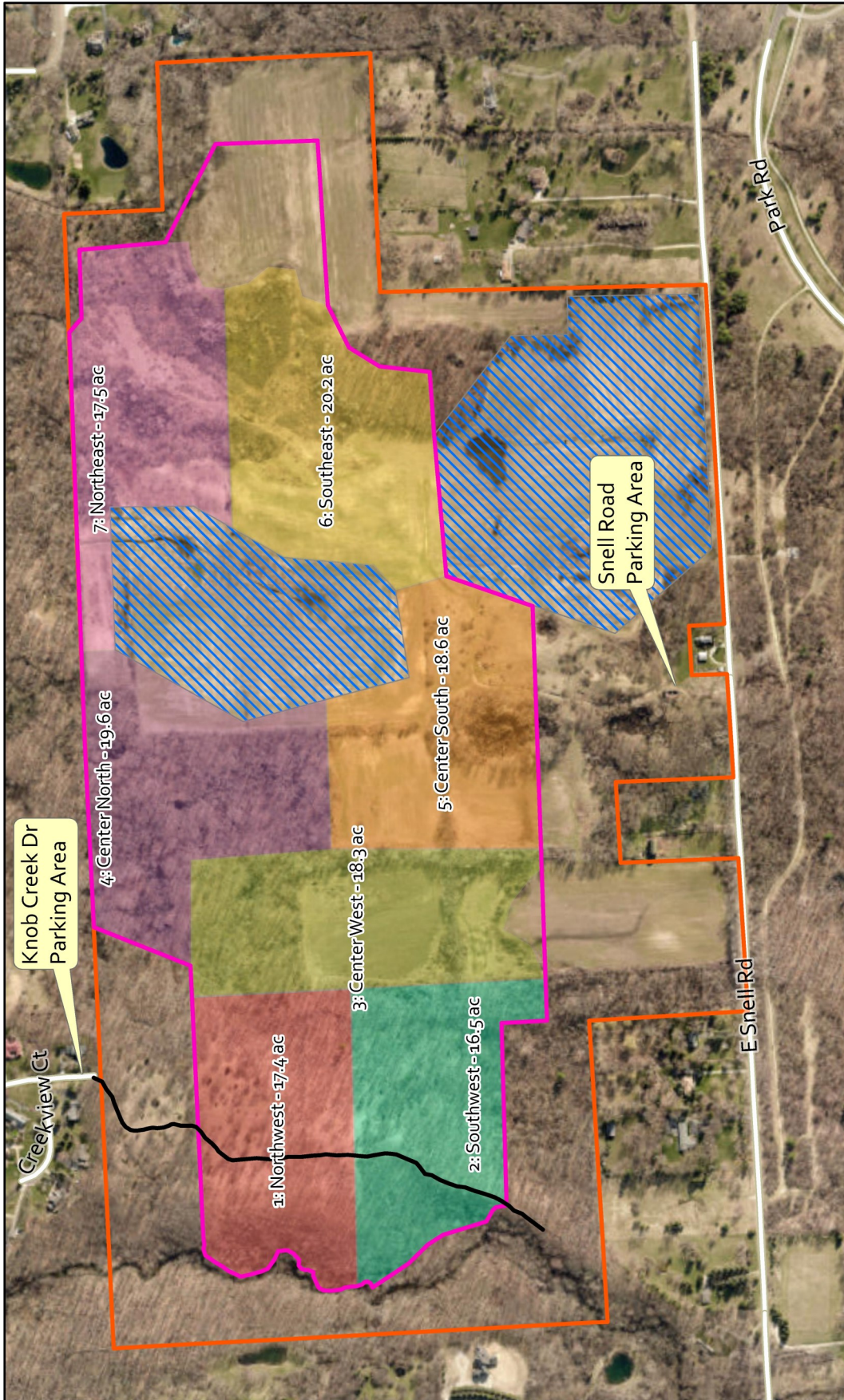
Hunting Partner's Name \_\_\_\_\_ Phone: \_\_\_\_\_

Required Information Must be Attached to Application (all sent to [knewton@oaklandtownship.org](mailto:knewton@oaklandtownship.org)):

Copy of Hunting License      Copy of Identification      Signed Waiver      Partner's Application Sent  
                                                                                                                 

**Send Separate Email Application, Including Hunt Dates Circled, During Application Periods Below:**

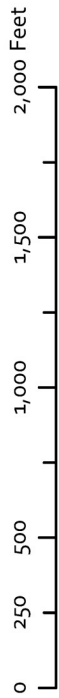
Application dates: Sept. 21- Sept. 27	Application dates: Oct. 12 - Oct. 18	Application dates: Nov. 16 - Nov. 22	Application dates: Dec. 7 – Dec. 13	Application dates: Dec. 28 – Jan. 3
For hunt dates of:	For hunt dates of:	For hunt dates of:	For hunt dates of:	For hunt dates of:
Tues/Wed, Oct 5 & 6	Tues/Wed, Oct 26 & 27	Wed Dec 1	Tues/Wed, Dec 21 & 22	Tues/Wed, Jan 11 & 12
Tues/Wed, Oct 12 & 13	Tues/Wed, Nov 2 & 3	Tues/Wed, Dec 7 & 8	Tues/Wed, Dec 28 & 29	Tues/Wed, Jan 18 & 19
Tues/Wed, Oct 19 & 20	Tues/Wed, Nov 9 & 10	Tues/Wed, Dec 14 & 15	Tues/Wed, Jan 4 & 5	Tues/Wed, Jan 25 & 26



- Park Boundary
- Trails
- Wetland Restoration
- Hunting Safety Zone

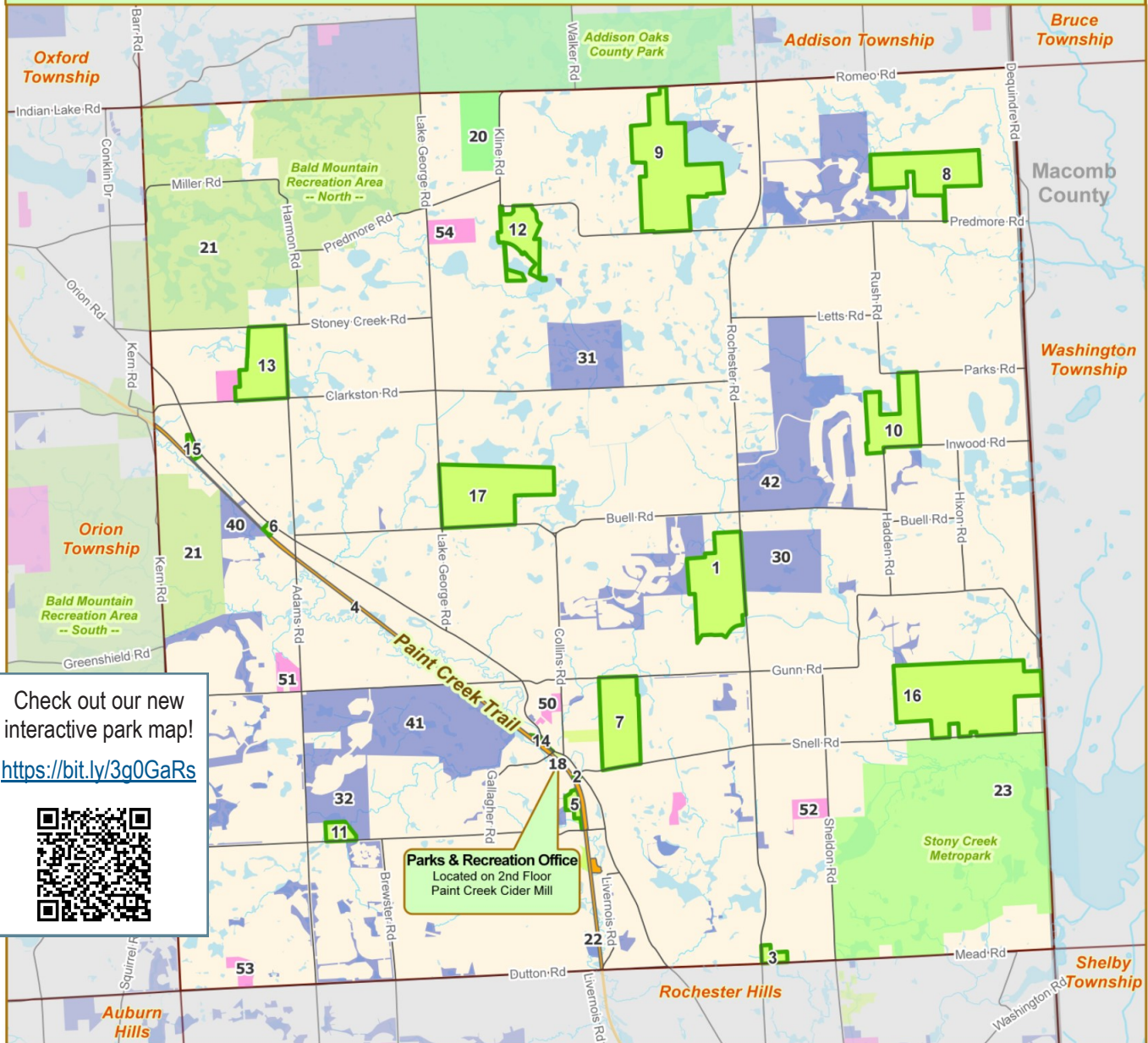
## Hunting Safety Zones and Hunter Units

Stony Creek Ravine Nature Park





# Parks and Recreation Opportunities in Oakland Township



Check out our new interactive park map!  
<https://bit.ly/3q0GaRs>

**Parks & Recreation Office**  
 Located on 2nd Floor  
 Paint Creek Cider Mill

## Oakland Township Parks and Recreation Facilities

### Conservation Areas

1. Blue Heron Environmental Area
2. Mill Creek Crossing
3. O'Connor Nature Park
4. Paint Creek Heritage Area- Fen
5. Paint Creek Heritage Area - Wet Prairie
6. Paint Creek Trail Parcel

### Community Parks & Recreation Facilities

7. Bear Creek Nature Park
8. Charles Ilsley Park
9. Cranberry Lake Park
10. Draper Twin Lake Park
11. Gallagher Creek Park
12. Lost Lake Nature Park
13. Marsh View Park
14. Mill Race Trail
15. Paint Creek Junction
16. Stony Creek Ravine Nature Park
17. Watershed Ridge Park
18. Paint Creek Cider Mill (Parks & Rec Office)

## Other Parks and Recreation Facilities

### Other Public Parks

20. Addison Oaks County Park
21. Bald Mountain State Recreation Area
22. Paint Creek Trail
23. Stony Creek Metropark

### Other Public Recreation Facilities

30. Blackheath Golf Club
31. The Myth Golf Club
32. Westwynd Golf Club

### Private Recreation Facilities

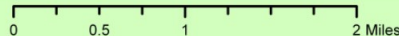
40. Royal Oak Archers
41. The Wyndgate Golf Course
42. Twin Lakes Golf & Swim Club

### Public Schools

50. Baldwin Elementary School
51. Delta Kelly Elementary School
52. Huger Elementary School
53. Musson Elementary School
54. Oakview Middle School

### Key to Features:

- Municipal Boundary
- Lakes & Ponds
- Paint Creek Trail
- Private Recreation
- Major Roads
- Streams & Rivers
- Public Recreation
- Public School



Last Update: 10/18/2019

# Ongoing Partnership Supports Restoring Park Prairies and Wetlands



(Continued from page 1)

Successful and scenic results of previous USFWS funded prairie restoration projects can be viewed at the following Oakland Township parks:

Charles Ilsley Park where fields in the central area were planted with native prairie species.

Draper Twin Lake Park where a 20-acre field in the northwest corner was planted to native prairie species.

Gallagher Creek Park where old fields were planted to native species.

Newer projects at Watershed Ridge Park and Blue Heron Environmental Area are in the process of getting established.

These habitat restoration successes are due in great part to our wonderful Natural Areas Stewardship staff who plan and maintain these natural areas and our Township residents who provide funding through our Land Preservation Millage.



Native Canada Wild Rye at Draper prairie.  
By Cam Mannino. <<https://oaklandnaturalareas.com/2018/08/03/draper-twin-lake-park-eastern-portion-a-rainbow-of-butterflies-fledglings-foraging-and-a-golden-prairie/>>



Mid-summer on the Eastern Prairie at Charles Ilsley Park. By Cam Mannino. <<https://oaklandnaturalareas.com/2018/07/13/photos-of-the-week-hungry-fledglings-and-prairies-bursting-with-color/>>

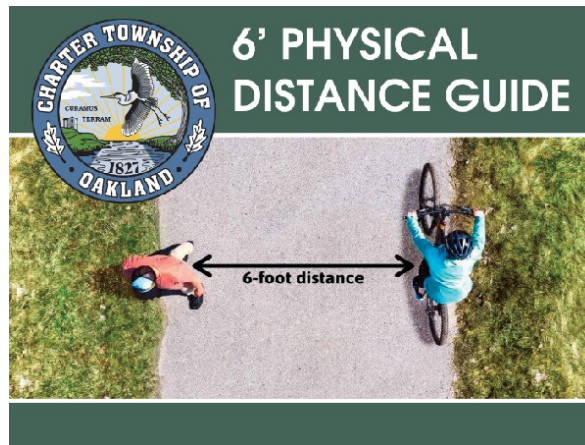
Parks and Recreation Commission  
Charter Township of Oakland  
4393 Collins Road  
Rochester, MI 48306-1670

PRESORTED  
STANDARD  
US POSTAGE PAID  
ROCHESTER, MI  
PERMIT NO 73

Phone: (248) 651-7810

Fax: (248) 601-0106

[www.oaklandtownship.org](http://www.oaklandtownship.org)



Seal designed by  
Richard Krupp



### Commission Meetings

The Parks & Recreation Commission meets at 7 pm on the second Wednesday of every month. Please see [www.oaklandtownship.org](http://www.oaklandtownship.org) for meeting agendas and packets.

### Office Hours and Location

Park permits, maps and descriptions are available at the Parks and Recreation Department office, located on the second floor of the Paint Creek Cider Mill, 4480 Orion Road. Check Parks & Recreation page at [www.oaklandtownship.org](http://www.oaklandtownship.org) for office hours.

### Parks and Recreation Commissioners

Brian Blust, Chairman

Dan Simon, Vice Chairperson

Craig Blust, Treasurer

Emily Barkham, Secretary

Jim Quesenberry, Commissioner

Cathy Rooney, Commissioner

Judy Workings, Commissioner

### Oakland Township Parks and Recreation Staff

Parks and Recreation Director Melinda Milos-Dale  
Administrative Assistant Carol Kasprzak  
Clerical Assistant Kim Newton  
Recreation Manager Becky McLogan

Recreation Program Assistant Julie Schoenherr  
Maintenance Foreman Doug Caruso  
Maintenance Technician Jeff Johnson  
Seasonal Maintenance Technician Dan Barton

Natural Areas Stewardship Manager Dr. Ben VanderWeide  
Stewardship Specialist Grant VanderLaan

Seasonal Stewardship Technicians Parker Maynard, Max Dunn, Katrianna Studtmann  
Maintenance and Recreation Staff Clif Selent,  
John McDowell, Brooke Patrician, Robert Zbytowski



Oakland Township Park Rules are enforced by the Oakland County Sheriff's Office.

### **FOR EMERGENCIES CALL 911**

If you have information or questions concerning a reported crime or accident, call the substation at 248-652-4617 Monday-Friday, 8 am-4 pm. All other calls please use dispatch at 248-858-4950.