

Oakland Township Parks and Recreation Commission Newsletter

Spring 2021

The Mission of Oakland Township Parks and Recreation Commission is to provide a sustainable system of parks, trails, programs, amenities, and services which create memorable experiences and a sense of place, contributes to the economic value of the Township and preserves the historical and natural heritage of the landscapes for existing and future generations.



Kayaking

Programs Pgs. 4-4
Spring Burns Pg 6
Help Wanted Pg13
National Trails Day Pg 13



Tai Chi in the parks



Virtual Classes

An Alternative to Boring Midwestern Bluegrass and Fescue Lawns
Dan Carter, PhD

Inside this issue:

<i>Parks Montage</i>	1
<i>Programs</i>	2-4
<i>Lost Lake Nature Center</i>	5
<i>Open Houses</i>	
<i>Stewardship</i>	6-7
<i>Historic District</i>	8-10
<i>Commission</i>	
<i>Paint Creek Trail News</i>	11-13
<i>Help Wanted</i>	13
<i>Program Registration</i>	14
<i>Form</i>	
<i>Parks Map</i>	15
<i>Commissioners/Staff</i>	Back Cover

**Oakland Township Parks and Recreation Brings It!
Keeping you engaged no matter the season!**



Archery Classes



Outdoor Nature Programs



Seed Collecting



Bird Walks

© Cam Mannino



Ice Skating



Yoga in the parks

Oakland Township Parks and Recreation 2021 Spring Fitness and Wellness Programs

Registration at: oaklandtownship.recdesk.com

The health of our community is our priority. Our team of staff and instructors are trained in safety protocol that follow CDC guidelines and are equipped with Personal Protection Equipment and gear (PPE). Face masks must be worn for all indoor classes and maintain 6 foot social distancing. Face masks must be worn outdoors where social distancing cannot be maintained.

All Levels Yoga (Outdoor) **Adults 12+**
Cranberry Lake Farm, 388 West Predmore, Oakland, MI 48363
Sundays, May 2 - June 6, 2021 9:30am-10:30am



Slow Flow Yoga (Outdoor) **Adults 12+**
Cranberry Lake Farm, 388 West Predmore, Oakland, MI 48363
Sundays, May 2 - June 6, 2021 11:00am-12:00pm

Up Dog Yoga, Red Lotus Yoga and Oakland Township Parks and Recreation are teaming up to bring you **in-person** yoga! The “All Levels” classes will accommodate all skills levels with an option to modify. The “Slow Flow” class will be more of a challenge with longer holds and postures. Maximum 15 participants per class.

Residents: \$30 Non-Residents: \$45 Register by April 25

Tai Chi Beginners (Indoor) **Adults 18+**
Paint Creek Cider Mill, 4480 Orion Rd., Rochester, MI 48306
Tuesdays, March 16 - May 4, 2021 6:00pm - 7:00pm **Register by March 9**

Tai Chi Beginners (Outdoor) **Adults 18+**
Cranberry Lake Farm, 388 West Predmore, Oakland, MI 48363
Tuesdays, May 11 - June 29, 2021 6:00pm - 7:00pm **Register by May 4**



These classes will cover breathing exercises with small Tai Chi movements, designed to enhance your overall health by improving balance and feelings of wellbeing. You should be able to support your weight while standing or have a chair handy if unable to stand without assistance. Grab some comfortable clothing and shoes. Flip flops or sandals are not recommended. Maximum 8 participants per indoor class, maximum 15 participants outdoor class.

Residents: \$30 Non-Residents: \$45

Tai Chi Continuing Beginners (Indoor) **Adults 18+**
Paint Creek Cider Mill, 4480 Orion Rd., Rochester, MI 48306
Wednesdays, March 17 - May 5, 2021 6:00pm - 7:00pm **Register by March 10**

Tai Chi Continuing Beginners (Outdoor) **Adults 18+**
Cranberry Lake Farm, 388 West Predmore, Oakland, MI 48363
Wednesdays, May 12 - June 30, 2021 6:00pm - 7:00pm **Register by May 5**



For those students who have taken Tai Chi classes with Marci Jenkins. Maximum 8 participants per indoor class, maximum 15 participants per outdoor class.

Residents: \$30 Non-Residents: \$45

Oakland Township Parks and Recreation 2021 Spring Nature Programs

Registration at: oaklandtownship.recdesk.com

The health of our community is our priority. Our team of staff and instructors are trained in safety protocol that follow CDC guidelines and are equipped with Personal Protection Equipment and gear (PPE). All students and instructors must observe social distancing of 6 feet from others and wear a mask.

The Buzz About Bees **6-10 years old**

Sunday, April 18, 2021 10:00 - 11:30am
Cranberry Lake Park, 388 West Predmore, Oakland, MI 48363

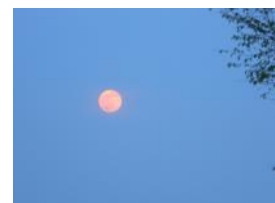


Without bees we wouldn't have most of the produce that we find in the grocery store, so we believe it's only fitting that we spend some time learning about these fuzzy pollinators of our parks! Join a naturalist beekeeper in their bee suit at Cranberry Lake Park to learn why we're buzzing about this topic! We will dress up as members of a hive and learn their roles, play a pollination game, read a story about a bee from our favorite bee puppet, and see a real honeycomb up close! Maximum 10 active participants.

Residents: \$5 Non-residents: \$7 Register by: April 14

Seasonal Adult Hike: The Pink Moon **Adults 18+**

Friday, April 23, 2021 8:00 - 9:30pm
Cranberry Lake Park, 388 West Predmore, Oakland, MI 48363



Did you know that every full moon of the calendar year has a name associated with it? April's full moon is known as the "Pink Moon" as it heralds in the arrival of early spring flowers like phlox! With spring right on the cusp of arriving we think that we should celebrate the end of winter with a beautiful astronomy themed hike through Cranberry Lake Park! Along with our interpretive nature walk we will be taking numerous breaks in the meadows to turn our attention skyward to try and spot some easy to see constellations and talk about their history and mythology. We will show our favorite astronomy apps for use on the trail and will teach you how to tell the difference between stars, planets and satellites, and will provide star charts to take home to continue your universal observations through the summer! Participants are asked to bring their own flashlights or headlamps.

Maximum 10 participants. **Residents: \$5 Non-residents: \$7 Register by: April 20**

Feathered Friends **Pre-K 3-5 years old**

Saturday, May 22, 2021 10:00 - 11:00am
Bear Creek Nature Park, 740 West Snell Rd., Rochester, MI 48306



It seems like our feathery friends have finally returned home from their winter vacation homes down south and we're extremely excited to have a chance to listen to them sing, watch them at our backyard feeders and observe their nest building! Join us at beautiful Bear Creek Nature Park for a morning celebrating birds! We will listen to an interactive story about eggs which will get everyone involved, play an egg and nest matching game, touch, feel, and play games with real bird feathers, and put together our own nests to take home!

Maximum 10 active participants. **Residents: \$5 Non-residents: \$7 Register by: May 19**

Cranberry Lake Compass and Map Treasure Hunt **6-10 years old**

Sunday, May 23, 2021 1 - 2:30pm
Cranberry Lake Park, 388 West Predmore, Oakland, MI 48363



People have it incredibly easy these days with our satellite guided telephones and access to the wealth of human information at our fingertips, but it wasn't always that way. Sometimes it can be fun to put the technology down and take out a good old fashioned hand-drawn map for an afternoon of treasure hunting. Join us at Cranberry Lake Park as we learn how to read a compass and pair it with a map in order to go on a treasure hunt across the historic grounds of this beautiful park. Participants will take home their own pouch of treasures that they find hidden throughout the park!

Maximum 10 active participants. **Residents: \$5 Non-residents: \$7 Register by: May 19**

Oakland Township Parks and Recreation 2021 Archery Programs

Marsh View Park, 3100 E. Clarkston Rd., Oakland, MI 48363
Registration at: oaklandtownship.recdesk.com

The health of our community is our priority. Our team of staff and instructors are trained in safety protocol that follow CDC guidelines and are equipped with Personal Protection Equipment and gear (PPE).

All Archery students, instructors, and spectators must observe social distancing of 6 feet from others and wear a mask.

Beginning Archery Ages 8 - Adult

Saturdays, May 1, - June 12, 2021 (no class May 22 & May 29) 10:00 - 11:00am

Looking for something new and fun to try on a beautiful Spring Saturday morning? This in-person fun class is for you and your family! Our instructors will cover safety, equipment and basic fundamentals of shooting. Sanitized equipment provided. Maximum 10 participants.



Residents: \$45

Non-residents: \$60

Register by: April 28

Next Step Archery Ages 8 - Adult

Wednesdays, May 5, - June 9, 2021

6:00 - 7:00pm

This in-person program is for archers who have taken Beginning Archery or archers with experience. Focus on improving your archery form and accuracy. Sanitized equipment provided or may use your own. Maximum 10 participants.

Residents: \$60

Non-residents: \$75

Register by: April 30



Open Range Shoot Ages 8 - Adult **FREE (pre-registration required)**

Saturdays, April 24 - November 6, 2021 (no sessions May 22, May 29, July 3, and September 4)

Choose a session: 11:30am, 12:30pm, 1:30pm, 2:30pm



Practice your archery skills. Children between 8 and 17 years of age must be accompanied by an adult. Range supervised by certified USA Archery Instructors. Not sure how to shoot? Range Masters can assist you with our **1st Shot Demo Program** - 5 minute teaching time/demo during Open Range Shoot Session Times. **Free Loan Program eligible** – bows, arrows targets provided or bring your own. Equipment will be sanitized between users and sessions. Social distancing will be practiced. All registrants must wear masks. Maximum of 10 participants per session



SENIORS ARCHERY TOURNAMENT

SUNDAY, MAY 16, 2021 10AM



Location: Marsh View Park, 3100 E. Clarkston Rd., Oakland, MI 48363

Age Groups: 50-54, 55-59, 60-64, 65-69, 70-74, 75-79, 80-84, 85-89, 90-94, 95-99, 100+

Divisions: Compound Release, Compound Finger, Recurve, Barebow Compound, Barebow Recurve

Rounds: 900 American, 60, 50, & 40 yards. 30 arrows at each distance.

How to Register: Please call 248-608-0250 or visit our website at www.michiganseniorolympics.org

Registration deadline: April 16, 2021

Michigan Senior Olympics is a 501 © 3 non-profit organization



DISCOVER!

LOST LAKE NATURE PARK



Nature Center | Open Houses | Fishing Dock | Sled Hill

A Partnership between Dinosaur Hill Nature Preserve and Oakland Township Parks and Recreation Commission

www.DinosaurHill.org

846 Lost Lake Trail, Oakland Township, MI 48363

(248) 656-0999

FREE!

Pre-Registration Required

FREE!

Oakland Township Parks and Recreation and Dinosaur Hill Nature Preserve have partnered to bring Oakland Township residents and others exciting new programs at Lost Lake Nature Park! Family, friends and neighbors are invited to explore everything this partnership has to offer at one of these FREE open houses. Open to all ages! We will be offering 2 sessions for each open house that'll take place on our reserved lakeside learning patio. **Each session will be 1.5 hours (12-1:30pm, and 2-3:30pm) and be limited to 10 active participants.** We can return to our typical open-house format once some normalcy returns to the world. All students and instructors must observe social distancing of 6 feet from others and wear a mask.

MUST PRE-REGISTER THROUGH <https://oaklandtownship.recdesk.com/>.

Sunday, April 25, 2021: The Frog and The Turtle

Michigan is very littoral, meaning we have plenty of regions lying along shores. With the return of the warmer weather and spring, our beautiful Lost Lake springs alive with the sounds of frogs croaking, herons dining, and lily pads emerging. Join us for a look at some of our favorite inhabitants of our kettle lake: frogs and turtles. We will be taking a look at a variety of turtle shells up close to learn about the differences and vocabulary attached to them, spending some time learning about the frog's life cycle, meeting an exotic frog from Australia, and discovering the benefits that these two animals have on the ecology of their environment! Our youngest explorers will even be putting together their own lifecycle craft to take home!



Sunday, May 30, 2021: The Michigan Forest

Any true Michigander is comfortable within the forest. Approximately 53% of our beautiful mitten is covered by forest, accounting for 19 million acres of timberland to explore and see. We are true people of the woods and we believe that the simple tree is often overlooked and pushed aside, so join us for an afternoon celebrating the noble tree! We will take a look at a tree cutting to learn what the rings we count represent (and how to estimate the age of a tree), learn about the respiratory cycle that keeps life sustained, learn about the benefits of forests (carbon storage and nutrition recycling) and even make your own leaf and flower pounding to take home!



Spring 2021 Controlled Burns in Oakland Township Parks

Oakland Township Parks and Recreation will conduct prescribed burns in spring 2021 between March and mid-May at **Bear Creek Nature Park, Charles Ilsley Park, Cranberry Lake Park, Draper Twin Lake Park, Lost Lake Nature Park, Watershed Ridge Park, and natural areas along the Paint Creek Trail.**

Historically, fire occurred regularly in natural communities of southeast Michigan. Our prairies, oak savannas, oak woodlands, and even some wetlands are not only adapted to fire, but require fire for their continued existence. We use prescribed burns to help restore ecological function to these natural communities.

Prescribed burns are conducted by a trained fire crew and done with permission from the local fire department. Although burns create smoke, we work to minimize the amount of smoke produced and limit public exposure to the smoke. We consult the weather forecast in the morning before making the decision to burn, so we cannot schedule prescribed burns for a specific day.

You can find more information about controlled burns at oaklandnaturalareas.com/prescribed-fire.



Volunteers Alex, Joan, Mike and Commissioner Dan Simon at 2018 prescribed fire at Bear Creek Nature Park.



Paint Creek Heritage Area - Wet Prairie. From left, Prescribed fire in process, By Sue Greenlee; Burn Crew Members Dr. Ben VanderWeide, Bill Kamman, Commissioner Dan Simon, Jim Lloyd, By Sue Greenlee; Flowers in bloom after prescribed fire.

Volunteers Needed!

Would you like to learn new skills, work with a great team, and get more involved in local conservation? Our natural areas stewardship volunteers help with bluebird nest box monitoring, native seed collecting, prescribed fire, invasive species control, photo monitoring, pollinator garden maintenance, outreach, and more! We fit opportunities to your availability and interests. No special skills required. We'll provide all training and tools you'll need. To learn more contact Natural Areas Stewardship Manager Ben VanderWeide (bvanderweide@oaklandtownship.org).



Natural Areas Information at your Fingertips!

Have you checked out our blog recently? The [Natural Areas Notebook](#) has the latest about what's happening in the parks, news about the latest stewardship work, and up-to-date information about stewardship events. Find this and much more at oaklandnaturalareas.com.



Spring 2021 Natural Areas Stewardship Events

Please join us for one of our nature events! Updated information and any last minute changes to these events can be found on our Natural Areas Notebook website at oaklandnaturalareas.com.

Pre-register for all Stewardship events at: <https://oaklandtownship.recdesk.com>

All minors must have a waiver signed by a guardian, and minors under 14 must be accompanied by a guardian.

Weekly Bird Walks

Join our friendly birders every Wednesday through May. We want to document the bird species using natural areas in our parks so that we can work to improve their habitat. All walks will start at 8:30 am. Please pre-register at oaklandtownship.recdesk.com. All participants will need to follow social distancing and other safety rules. Bird walks may be cancelled due to COVID-19.

1st Wednesday of month – Bear Creek Nature Park

2nd Wednesday of month – Cranberry Lake Park

3rd Wednesday of month – Charles Ilsley Park

4th Wednesday of month – Draper Twin Lake Park

5th Wednesday of March – Lost Lake Nature Park



Bird watching at Oakland Township Parks

Celebrate Spring, Pull Garlic Mustard!

Garlic mustard and dame's rocket push out the native plants that our wildlife need. We need your help to remove these invasive plants from our parks! Workdays last from 9 am to 12 pm, but will be cancelled if the weather is bad. All volunteers must sign a waiver (with minor's waiver signed by a guardian), and minors under 14 must also be accompanied by a guardian. Please pre-register at oaklandtownship.recdesk.com. All participants will need to follow social distancing and other safety rules. Workdays may be cancelled due to COVID-19.

Tuesday, May 4, 9 am to 12 pm. Bear Creek Nature Park, 740 West Snell Rd.

Tuesday, May 11, 9 am to 12 pm. Watershed Ridge Park, 1880 West Buell Rd.

Tuesday, May 18, 9 am to 12 pm. Charles Ilsley Park, 1479 East Predmore Rd.

Tuesday, May 25, 9 am to 12 pm. Paint Creek Trail. Meet at the Paint Creek Cider Mill, 4480 Orion Rd.

Watch the Woodcock Dance: an Earth Day Observation

Friday, April 23, 7:30 pm at Bear Creek Nature Park, 740 West Snell Rd

You know it's spring when the "timberdoodles" dance! While we wait for sunset, we'll enjoy a spring evening and learn cool facts about woodcock biology. As the light fades we will watch with hushed anticipation for this avian spectacle, the male woodcock's aerial mating display. Bring a comfortable lawn chair, binoculars, and layers to add as the night cools down. Pre-register at <https://oaklandtownship.recdesk.com>. All participants will need to follow social distancing and other safety rules. May be cancelled due to COVID-19.
Register Online



Woodcock image credit: <http://i691.photobucket.com/albums/vv273/stacey13/Paintings/woodcockimage.jpg>

HAVE YOU VISITED YOUR HISTORIC PARK LATELY? CRANBERRY LAKE FARM HISTORIC DISTRICT




Painting by Betsy Marsh (above) for the Garden Party virtual artist presentation. As we develop reading places and a Story Lady Garden at CLF, we want to highlight the insight and writings of Helen S. Williams who lived at CLF in 1948 for a very short period with her husband Cy. She moved to Rochester and opened the Book Stall, a children's book store. Her enthusiasm for children's literature was remarkable. Helen wrote a journal from 1985 to 1993 called *The Incessant Trumpet*, which is where we found the theme for our art challenge—The Garden Party. The artists were challenged to design a picture around their visions from the reading. Watch for our Story Lady Garden developments this fall 2021!

Cranberry Lake Farm is open for your enjoyment, relaxation, and exercise. Walk the grounds and see the history on display with old implements, stone barbecues, picnic areas, and scenic surroundings. Located at 388 West Predmore Road in northern Oakland Township. The sixteen acre historic district is listed in the National Register of Historic Places and represents a rural farmsteads evolution into a recreational retreat. Open dusk to dawn for hiking the grounds. For more information, please contact the Historic District Commission <http://bit.ly/OTHDC> or bbarber@oaklandtownship.org or office 248-608-6807. Follow us on Facebook @CLFdistrict.

Watch for many programs throughout the year!



Congratulations to the happy couples!
This way to the 'I do's'  ***CLF***

We are open for wedding ceremonies and receptions (sorry no alcohol in the park). We also have FREE wedding photography onsite, just make sure to bring your photographer. Avoid the area when others have a private reservation. <http://bit.ly/OTHDC>

Below with permission Janet Almstadt-Davison

Libby Dwyer

Bobbie Tarbunas



HAVE YOU VISITED YOUR HISTORIC PARK LATELY? CRANBERRY LAKE FARM HISTORIC DISTRICT



BACK THIS YEAR!
Beekeeping workshops for only \$5 per person – includes all four sessions!
Sat 12 noon to 1:30 PM on
May 8, June 12, July 10, Aug 14
Meet your local beekeeper Preston Zale

“We will cover the basics of bees and bee health, beehives and maintenance, and of course, harvesting honey. Our meetings will be held indoors with optional trips to visit the hives a short distance walk through the Historic District”

Plein Air Thursdays at the Farm:

June 17, July 15, Aug 19, Sept 16 from 10 am to 2 pm

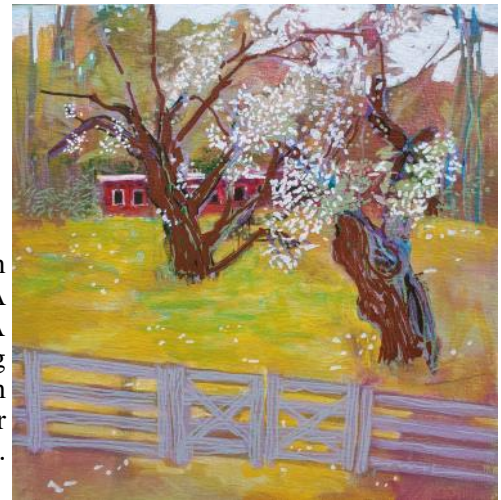
Cost: \$25 per person; Class size limit of 12

Please bring your own materials, mask, and a bag lunch

This program will be cancelled if it is raining.

Program begins with a demonstration at 10am, outdoor painting with individual attention, followed by lunch and informational critique. A materials list of recommended supplies is available upon registration. A great class for all levels! Join the rich experience of painting or drawing with two professional artists at the rustic Cranberry Lake Farm in Oakland Township. The grounds provide varied subject matter including historical buildings, beautiful landscapes and distant vistas.

Painting by Christina Haylette



What's ahead in 2021? The HDC will have Croquet game play, back by popular demand, with music by The Ruffwater Stringband; Hammock Escape at the Sugar Maple Row; and plenty of open space for picnics and hiking around history! The Parks and Recreation offer weekly Tai Chi and Yoga. Also watch for the self-guided CLF history hunt this spring and summer. In Sept 18-19, the Oakland Township Historical Society will be offering their Flumerfelt Flea Market, so come by for a grand time and maybe leave with something in your hearts! Picnic area is at the east end of the historic district.



Cranberry Lake Farm Historic District Apple Orchard



Care and Pruning of your Fruit Trees **A hands-on Workshop* *
Date: Sat. March 27, 2021 **Time:** 10 am to 12 noon **Fee:** \$5 (*15 person cap)

Your Instructor, Master Gardener Clay Ottoni has been farming for over five decades growing fruit trees, cover crops, row crops, and vegetables earning the Golden Shovel Award. First, a short presentation before the hands-on field work begins in the apple orchard. **Please bring gloves and bypass pruners or loppers.** This program runs rain or shine. Dress appropriately for outdoor Michigan weather conditions. Ages 14 and up.



Many Thank You's for the recent John Deere Side-delivery Rake restoration by Alec Dimovski for his Boy Scout Troop #60 Eagle Scout project. Before and after pictures show the amount of work that had to be done to transform an old, rusted farm implement. Challenges along the way did not keep Alec from perfecting the rake as he put together a team during Covid-19, followed safety standards, dug a trench in the frozen ground, hauled boulders, and even when a snowstorm toppled his supply tent, he still succeeded in his project goals! You will find the rake at the eastern end of the apple orchard, near the picnic table. Thank you Alec for a job well done!





Paint Creek and Polly Ann Trails Selected as Sites for Detroit Institute of Art Inside|Out Program



Hines Park, Summer 2017

The Paint Creek Trail and the Polly Ann Trail will host the Detroit Institute of Art's popular Inside|Out program this year. This innovative program delivers and installs high-quality reproductions from the DIA's collection to outdoor venues in Macomb, Oakland, and Wayne counties. Both recreational trails are two of twenty-four communities and organizations selected for the program's 2021 season.

A total of eight reproductions will be placed at sites along both trails as well as along the new Clarkston Road connector in Orion Township. The two trails have recently been connected via a 3-mile long path and bridge over the Paint Creek. The Polly Ann and Paint Creek Trails are part of the bicycling route of Michigan's Iron Belle Trail network, which extends from the far western tip of the Upper Peninsula to Belle Isle in Detroit.

The artworks will be placed within walking or biking distance of one another allowing trail users to enjoy a pleasant day out on the trails. Pieces will be located in the Village of Oxford, Orion Township, the Village of Lake Orion, and Oakland Township. An interactive map showing the exact locations of the artwork will be available on the DIA's website for the duration of the installation.

The DIA's Inside|Out program brings high-quality reproductions of masterpieces from the museum collection to outdoor venues throughout the region. The trails will host the artworks from May through October and plan to host joint events, such as a docent-led bicycle tour of the pieces, during the installation's six-month long run.

(Continued on page 12)



(Continued from page 11)

New Signage on the Trail

In 2018, the Paint Creek Trailways Commission received a \$25,000 Iron Belle Trail mini-grant from the Michigan Department of Natural Resources to update signage along the trail. In early December last year, two gateway and nine kiosks signs were added to the trail, replacing signage that in some cases was over thirty years old. The signs include the trail's redesigned logo as well as the Iron Belle Trail logo. The Paint Creek Trail is part of the Iron Belle's biking route, which travels up the east side of the state. The new kiosks include an updated map highlighting trail amenities, local points of interest, Iron Belle Trail connections, and the new trail extension into downtown Lake Orion.

The next phase of the signage project is to add wayfinding signage to the trail along with three additional gateway signs. The new signage is expected to be installed this summer.



Gateway sign at Ludlow in Rochester



Kiosk at Silverbell trailhead in Oakland Township

(Continued on page 13)

Paint Creek Trail News

By Melissa Ford, Trail Manager manager@paintcreektrail.org



(Continued from page 12)

National Trails Day – June 5, 2021



At this time, the Paint Creek Trailways Commission has not made a decision regarding hosting National Trails Day in person this year. The Commission will continue to monitor current health conditions and guidelines provided by the state and the CDC regarding in-person outdoor gatherings. Further information about this year's event will be made available in mid-March at <http://paintcreektrail.org/wordpress/2021-national-trails-day/>.

A Friendly Reminder during the Spring Thaw

Riding on a soft trail surface wrecks the trail. It leaves ruts, contributes to erosion, and creates an unrideable hard-to-fix trail surface. If you are leaving a visible rut, the trail is too soft to ride.

Warm weather during the spring is especially critical for the trail as the freeze-thaw cycle results in a soft surface. If the trail is soft and muddy, please ride on pavement until the trail dries out or refreezes. Thank you!



[facebook.com/PaintCreekTrail](https://www.facebook.com/PaintCreekTrail)



twitter.com/PaintCreekTrail



PaintCreekTrail.org

Parks and Recreation Help Wanted!

Parks and Recreation Clerical Assistant

Are you a "people person"? Savvy with technology? We're hiring at Parks and Recreation! This permanent part-time hourly position is the first-line representative of the Parks and Recreation Department. Typical duties include receiving both in-person and virtual inquiries, coordinating program registrations and permits, cash receipting, preparing and maintaining office supply orders, deliveries and shipments, records and databases, reports, and correspondence.

Parks and Recreation Worker

We're adding to our team! If you are a "people person" who likes to help people have fun, this is for you! This permanent part-time hourly position's duties are to perform program implementation assistance and facility operations support for facilities, grounds and programs. Some programs and services occur outside the typical workweek so you must be willing and able to work evenings, weekends as well as periodic weekdays during normal business hours.

Complete job descriptions and postings are available at www.oaklandtownship.org under Employment Opportunities. The Charter Township of Oakland is an Equal Opportunity Employer.



Oakland Township Parks and Recreation Program Refund Policy

Registrants will receive a full refund for programs cancelled by Oakland Township Parks and Recreation. Registrants withdrawing more than 4 business days prior to the program start date will receive a refund, less a \$5.00 administration fee. No refunds will be made if withdrawing less than 4 business days from program start date. All registrants wishing to withdraw, must do so during regular business hours Monday-Friday, 9am-3pm by phone at 248-651-7810 or by email at dgallo@oaklandtownship.org. Visit www.oaklandtownship.org for complete program information and other Park and Recreation information, permits, and ordinances.



Oakland Township Parks and Recreation 2020-2021 Registration Information

Oakland Township resident registration starts NOW!

(This is for residents living within the Oakland Township boundary.)

Non-Resident registration begins one week prior to the program registration deadline date.

Programs fill-up quickly so please register early!

Registration Options:

1. **ONLINE:**

We encourage everyone to use our new online program registration system at:

<https://oaklandtownship.recdesk.com>

Now you can register for an Oakland Township program at any time, from anywhere you have an internet connection, using a credit card (MasterCard, Visa, or Discover). If you have questions feel free to call 248-651-7810 and we will be happy to walk you through the system.

2. **BY MAIL:**

For a printable registration and waiver forms visit www.oaklandtownship.org. Send the completed forms by USPS mail to: Oakland Township Parks and Recreation, 4393 Collins Rd., Rochester, MI 48306. Or drop off your registration and waiver forms in the after hours DROP-BOX at Oakland Township Hall, 4393 Collins Rd., Rochester, 48306.

Make checks payable to **Oakland Township Parks and Recreation**.

Mail at least two weeks before program date!

3. **IN PERSON:**

Visit us at our office location by appointment only and register in person, M-F, 9am-3pm.

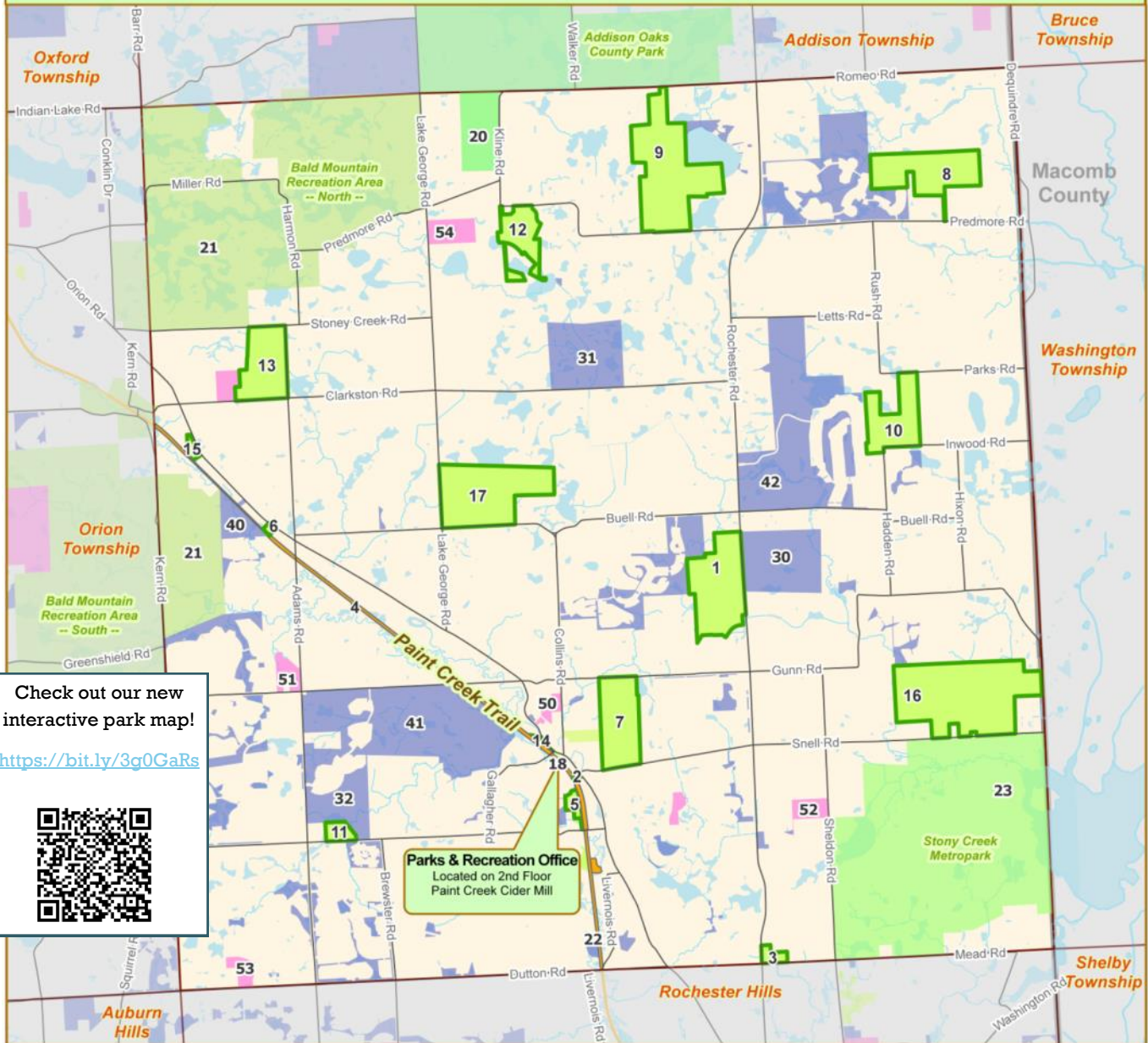
Call 248-651-7810 for an appointment, M-F, 9am-3pm. You can pay by credit card (MasterCard, Visa, American Express, or Discover accepted with \$2.95 fee) or by cash or check.

Paint Creek Cider Mill Building (2nd Floor)

4480 Orion Road, Rochester, MI 48306

Registration and waiver forms must be signed by each registrant or (the parents/guardians of minor) to participate in our programs. Find liability waivers at www.oaklandtownship.org > Township Departments > Parks and Recreation > Programs > scroll to the registration form and waiver that you need in center of page.

Parks and Recreation Opportunities in Oakland Township



Check out our new interactive park map!
<https://bit.ly/3g0GaRs>

Parks & Recreation Office
 Located on 2nd Floor
 Paint Creek Cider Mill

Oakland Township Parks and Recreation Facilities

Conservation Areas

1. Blue Heron Environmental Area
2. Mill Creek Crossing
3. O'Connor Nature Park
4. Paint Creek Heritage Area- Fen
5. Paint Creek Heritage Area - Wet Prairie
6. Paint Creek Trail Parcel

Community Parks & Recreation Facilities

7. Bear Creek Nature Park
8. Charles Ilsley Park
9. Cranberry Lake Park
10. Draper Twin Lake Park
11. Gallagher Creek Park
12. Lost Lake Nature Park
13. Marsh View Park
14. Mill Race Trail
15. Paint Creek Junction
16. Stony Creek Ravine Nature Park
17. Watershed Ridge Park
18. Paint Creek Cider Mill (Parks & Rec Office)

Other Parks and Recreation Facilities

Other Public Parks

20. Addison Oaks County Park
21. Bald Mountain State Recreation Area
22. Paint Creek Trail
23. Stony Creek Metropark

Other Public Recreation Facilities

30. Blackheath Golf Club
31. The Myth Golf Club
32. Westwynd Golf Club

Private Recreation Facilities

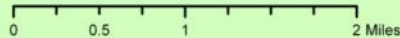
40. Royal Oak Archers
41. The Wyndgate Golf Course
42. Twin Lakes Golf & Swim Club

Public Schools

50. Baldwin Elementary School
51. Delta Kelly Elementary School
52. Huggar Elementary School
53. Musson Elementary School
54. Oakview Middle School

Key to Features:

- Municipal Boundary
- Lakes & Ponds
- Paint Creek Trail
- Private Recreation
- Major Roads
- Streams & Rivers
- Public Recreation
- Public School

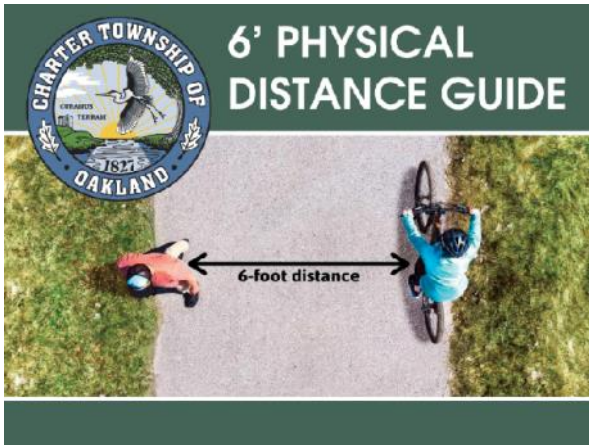


Leaflet | Map data © OpenStreetMap contributors, Imagery © Mapbox

Parks and Recreation Commission
Charter Township of Oakland
4393 Collins Road
Rochester, MI 48306-1670

PRESORTED
STANDARD
US POSTAGE PAID
ROCHESTER, MI
PERMIT NO 73

Phone: (248) 651-7810
Fax: (248) 601-0106
www.oaklandtownship.org



Oakland Township Parks and Recreation Staff

Parks and Recreation Director
Administrative Assistant
Clerical Assistant
Recreation Manager

Melinda Milos-Dale
Carol Kasprzak
Deb Gallo
Becky McLogan

Recreation Program Assistant
Maintenance Foreman
Maintenance Technician
Natural Areas Stewardship Manager
Stewardship Specialist
Maintenance and Recreation Staff

Julie Schoenherr
Doug Caruso
Jeff Johnson
Dr. Ben VanderWeide
Grant VanderLaan
Clif Selent and
Robert Zbytowski

Commission Meetings

The Parks & Recreation Commission meets at 7 pm on the second Wednesday of every month. Please see www.oaklandtownship.org for meeting agendas and packets.

Office Hours and Location

Park permits, maps and descriptions are available at the Parks and Recreation Department office, located on the second floor of the Paint Creek Cider Mill, 4480 Orion Road. Check Parks & Recreation page at www.oaklandtownship.org for office hours.

Parks and Recreation Commissioners

Brian Blust, Chairman
Dan Simon, Vice Chairperson
Craig Blust, Treasurer
Emily Barkham, Secretary
Jim Quesenberry, Commissioner
Cathy Rooney, Commissioner
Judy Workings, Commissioner



Online
Registration



Facebook
Page



Interactive
Map



Instagram



Natural Area
Notebook

Oakland Township Park Rules are enforced by the Oakland County Sheriff's Office.

FOR EMERGENCIES CALL 911

FOR NON-EMEGENCIES CALL 248-858-4950

If you would like to report an incident in any of the parks, please call the substation at 248-652-4617 Monday-Friday, 8 am-4 pm.

Outside of these hours please call Oakland County dispatch at 248-858-4950.

Any other questions concerning parks can be answered by the Park Office at 248-651-7810